

**KLIMAK  
FAN COIL UNITS.**



# TABLE OF CONTENTS.

<b>04</b>	PROJECT REFERENCE
<b>12</b>	UNIT MODEL IDENTIFICATION
<b>14</b>	DECORATIVE FAN COIL UNIT
<b>26</b>	CONCEALED DUCTED FAN COIL UNIT (LOW ESP)
<b>34</b>	CONCEALED DUCTED FAN COIL UNIT (MEDIUM ESP)
<b>48</b>	CONCEALED DUCTED FAN COIL UNIT (HIGH ESP)
<b>60</b>	WIRING DIAGRAM OF FAN COIL UNIT
<b>62</b>	CONTACT US

---

# PROJECT REFERENCE

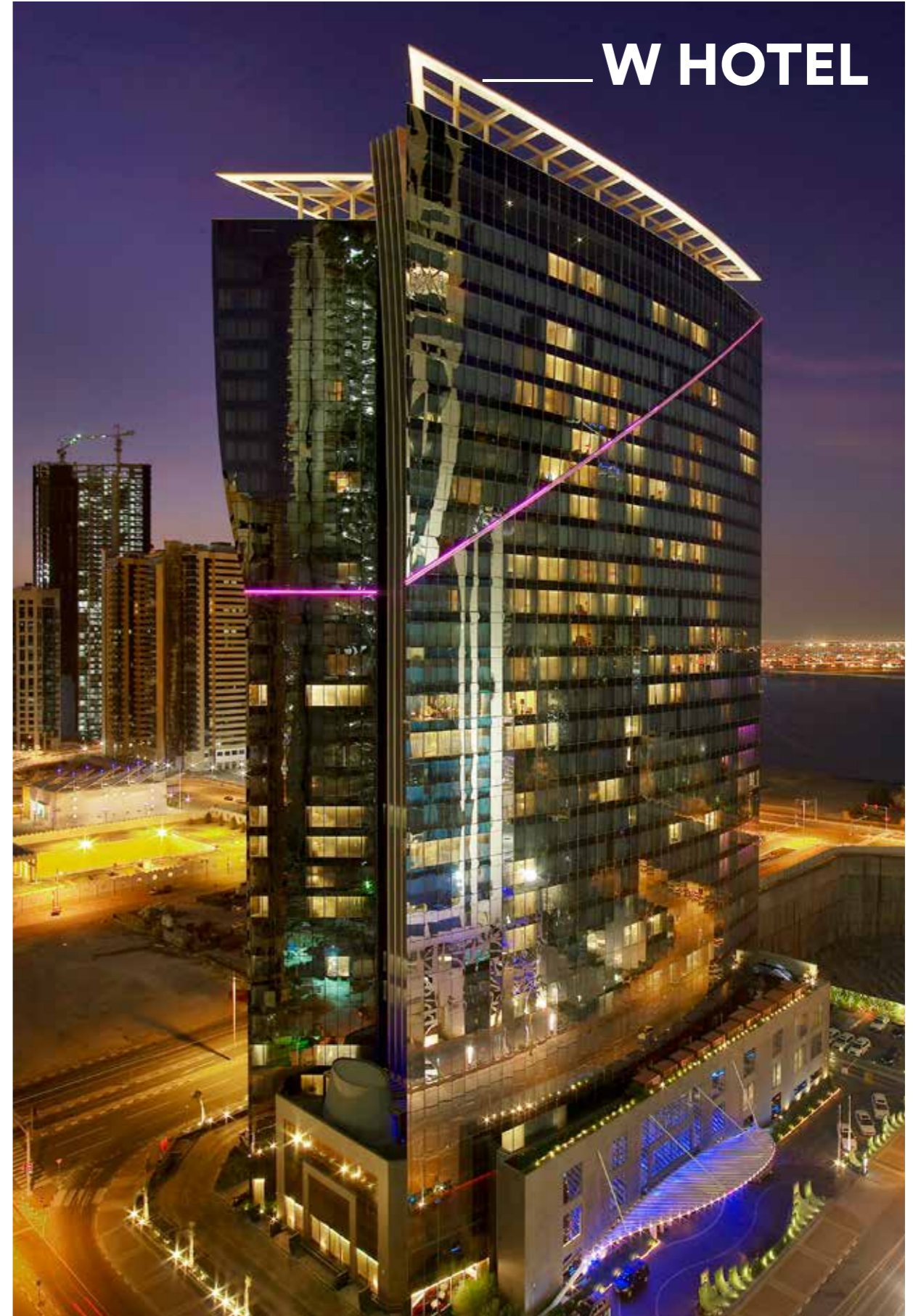
---

# WOQOOD TOWER \_\_\_\_\_



PROJECT REFERENCE

# \_\_\_\_\_ W HOTEL



PROJECT REFERENCE

# JAIDAH TOWER



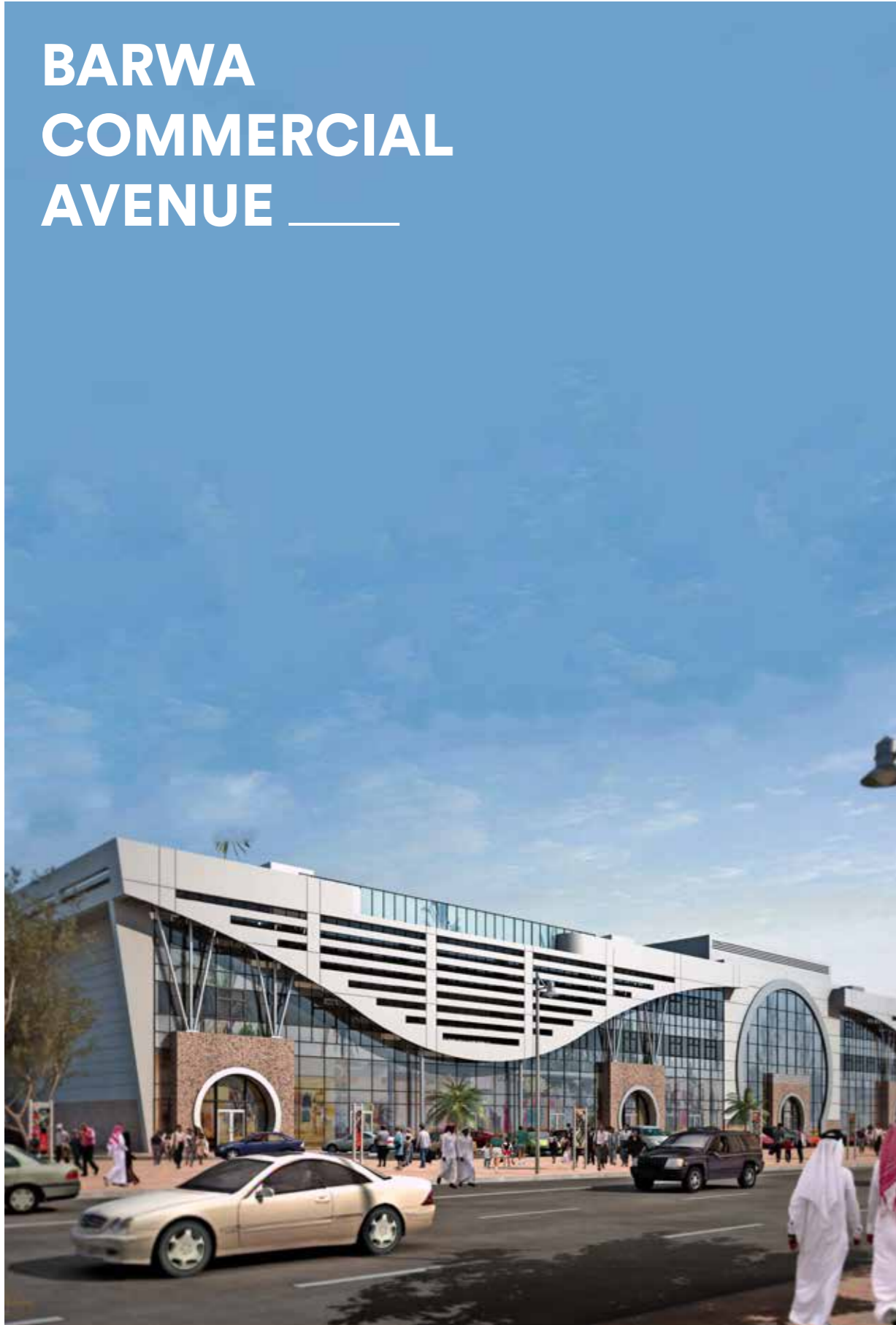
PROJECT REFERENCE

# AL BIDDAR TOWER



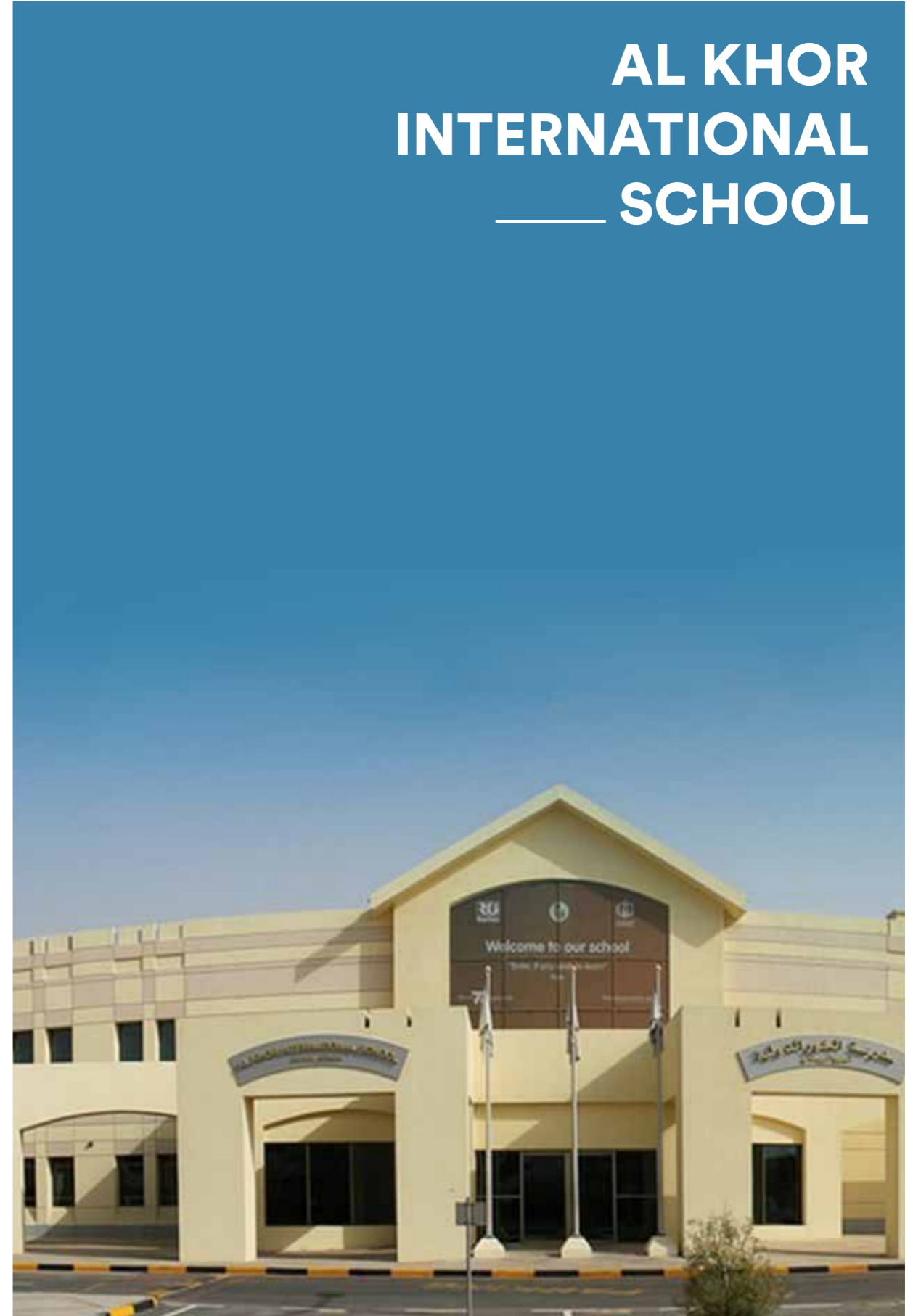
PROJECT REFERENCE

# BARWA COMMERCIAL AVENUE \_\_\_\_\_



PROJECT REFERENCE

# AL KHOR INTERNATIONAL SCHOOL \_\_\_\_\_



PROJECT REFERENCE

# UNIT MODEL IDENTIFICATION

HC FC - 03 M 1 DA

**UNIT TYPE**

- HC - Horizontal Concealed
- VC - Vertical Concealed
- HD - Horizontal Decorative
- VD - Vertical Decorative

**PRODUCT**

Fan Coil Unit

**RATED AIR FLOW**

1:100CFM

**EXT. STATIC PRESSURE**

- F - Free blow
- L - Low Ext. Static Pressure (30 ~ 50Pa)
- M - Medium Ext. Static Pressure (50 ~ 75Pa)
- H - High Ext. Static Pressure (100 ~ 150Pa)

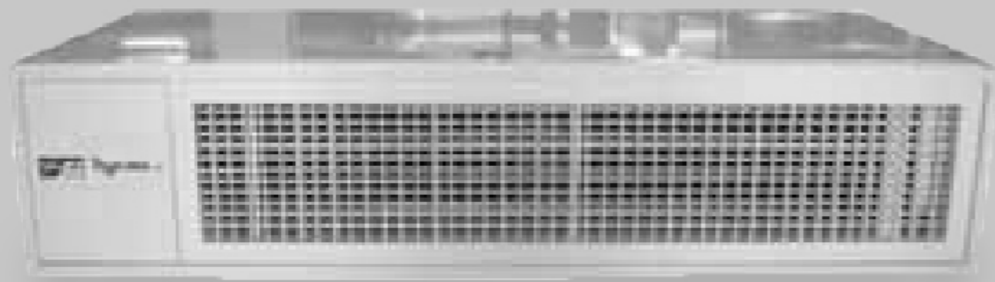
**TUBE SIZE**

- 1 - OD 3/8 inch (10mm)
- 2 - OD 1/2 inch (12mm)

**CABINET TYPE**

- S - Single Skin without Aluminum Frame
- SA - Single Skin with Aluminum Frame
- D - Double Skin without Aluminum Frame
- DA - Double Skin with Aluminum Frame

# DECORATIVE FAN COIL UNIT



## SPECIFICATIONS

### CABINET

Single skin or double skin casing (inner perforated sheet or flat sheet) made of powder coated galvanized steel assembled in aluminum extrusion profiles, with 15mm thick closed cell foam insulation.

**Option: For hygienic unit, inner stainless steel sheet (additional cost).**

### FAN SECTION

Fan Motor: 3 speed fan motors with permanent split capacitor, thermal overload protection, and lifetime lubricated ball bearing.

Fan Blower: DIDW forward curved centrifugal fan blower made of galvanized steel directly driven by fan motors.

All fan blowers are statically and dynamically balanced.

### COIL SECTION

Cooling coils made out of 10mm or 12mm OD copper tubes mechanically bonded into aluminum fins, with copper header; fin thickness 0.1mm, with fin spacing 2.0mm (12FPI). Cooling coils are ARI rated.

### DRAIN PAN

Drain pan made of powder coated galvanized steel along with auxiliary drain pan extending under valve package, insulated with closed cell foam.

**Option: Drain pan made of stainless steel (additional cost).**

### FILTER SECTION

12mm thick aluminum return air filter assembled in aluminum frames provided for easy withdrawal and replacement.

### AIR GRILLE

Horizontal Unit: Double deflection supply air grille and stamped return air grille.  
Vertical Unit: Plug-in Supply Air Grille and Return Air Grille (optional extra).

### HEATER BATTERY

PTC Electrical Heater Battery is supplied with inbuilt thermal protection for heating application on special requirement (additional cost).



Unit Model <sup>1</sup>		HDFC-02F	HDFC-03F	HDFC-04F	HDFC-05F	HDFC-06F	HDFC-08F	
<b>Unit Performance</b>								
Nom. Airflow Rate	High	(L/S)	95	142	189	236	284	378
	Medium	(L/S)	86	131	175	219	264	353
	Low	(L/S)	78	117	156	195	234	311
External Static Pressure		(Pa)	Free Blow					
Noise Level <sup>2</sup>	High	dB(A)	<45	<46	<50	<48	<49	<53
	Medium	dB(A)	<43	<44	<47	<45	<47	<50
	Low	dB(A)	<40	<41	<45	<44	<44	<48
<b>Physical Data</b>								
Cooling Coil Size <sup>3</sup>	Fin Height	(mm)	150	150	200	150	200	200
	Fin Length	(mm)	610	610	610	864	864	1118
	Coil Style		3/8" OD Copper Tube + Aluminum fins 12 FPI					
	Max. Working Pre		20.0 Bar					
Power Supply			220-240V/1PH/50HZ					
Fan Motor	Motor Type		3-Speed Fan Motor					
	Output <sup>2</sup>	(w)	30	35	40	50	60	80
	Power <sup>2</sup> Consumption	(w)	45	50	65	75	145	216
	Qty		1	1	1	1	1	1
Fan Blower	Qty		1	1	1	2	2	2
	Size (Dia x L)	(mm)	160 X 200	160 x 200	160 x 200	160 x 200	160 x 200	160 x 200
	Fan Blower Type		Double Inlet Forward Curved Centrifugal Fan Blower					
Chilled Water Connection		(inch)	1/2" MPT					
Drainage Connection		(inch)	3/4" MPT					
Net Dimension <sup>4</sup>	L x W x H	(mm)	660 x 830 x 295			660 x 1080 x 295		660 x 1340 x 295
Packing Dimension <sup>4</sup>	L x W x H	(mm)	680 x 900 x 365			680 x 1150 x 365		660 x 1410 x 365
Net Weight <sup>5</sup>	4 Row Coil	(kg)	30.0	30.0	36.0	43.0	49.0	64.0
	5 Row Coil	(kg)	31.0	31.0	38.0	46.0	52.0	68.0
	6 Row Coil	(kg)	32.0	32.0	40.0	48.0	54.0	71.0

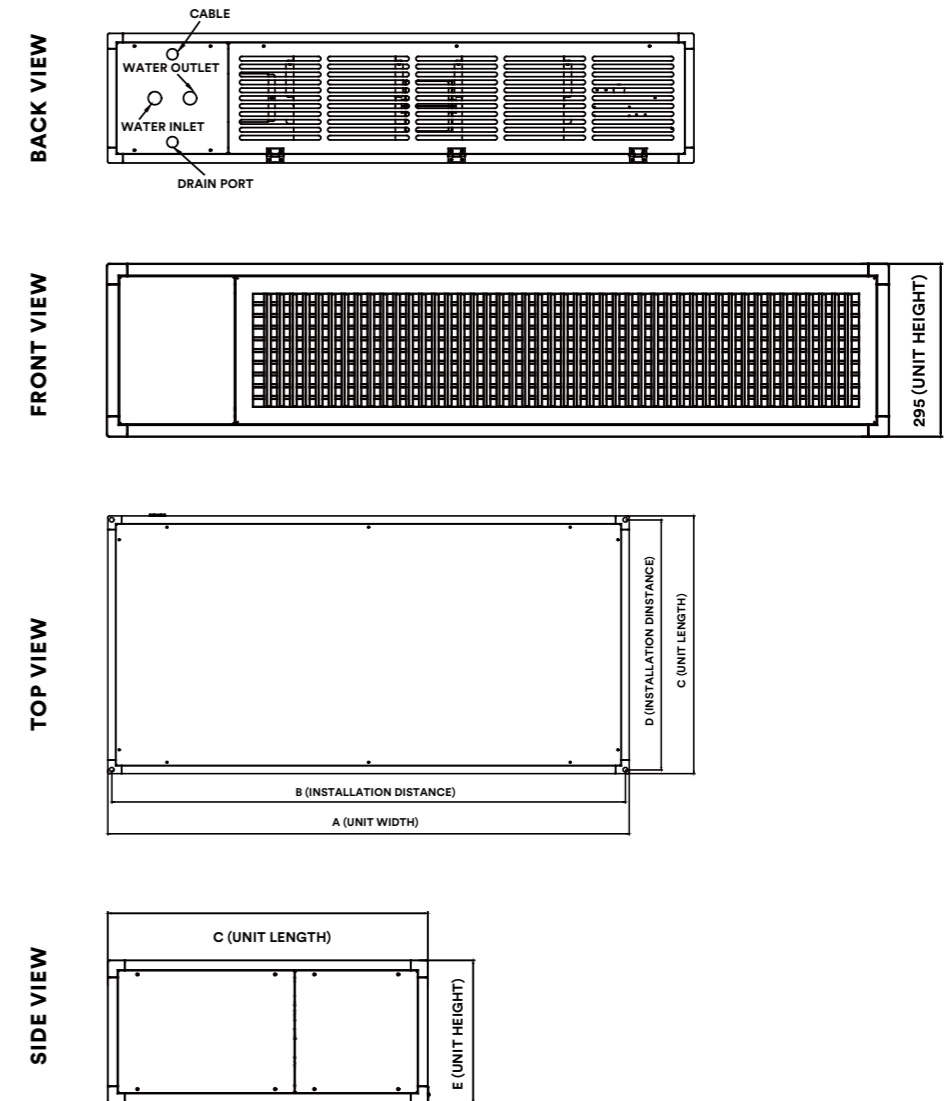
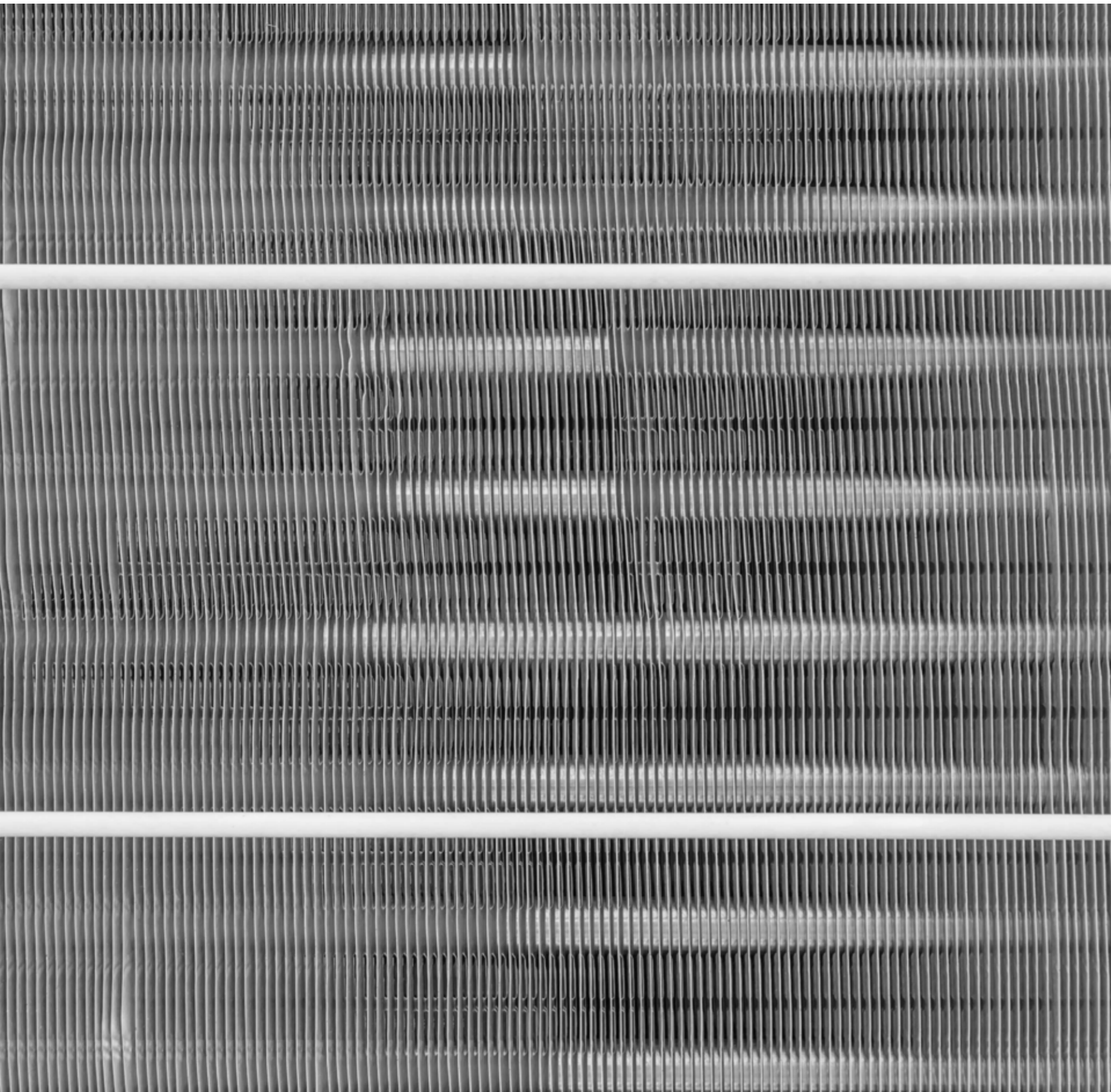
Unit Model <sup>1</sup>		HDFC-10F	HDFC-12F	HDFC-14F	HDFC-18F	HDFC-20F	
<b>Unit Performance</b>							
Nom. Airflow Rate	High	(L/S)	472	572	667	860	1080
	Medium	(L/S)	442	503	586	750	940
	Low	(L/S)	389	453	528	600	750
External Static Pressure		(Pa)	Free Blow				
Noise Level <sup>2</sup>	High	dB(A)	<49	<51	<53	<57	<59
	Medium	dB(A)	<48	<49	<50	<55	<56
	Low	dB(A)	<46	<47	<47	<51	<53
<b>Physical Data</b>							
Cooling Coil Size <sup>3</sup>	Fin Height	(mm)	200	200	200	250	300
	Fin Length	(mm)	1295	1473	1651	1651	1651
	Coil Style		3/8" OD Copper Tube + Aluminum fins 12 FPI				
	Max. Working Pre		20.0 Bar				
Power Supply			220-240V/1PH/50HZ				
Fan Motor	Motor Type		3-Speed Fan Motor				
	Output <sup>2</sup>	(w)	50 + 50	55 + 55	60 + 60	105 + 105	145 + 145
	Power <sup>2</sup> Consumption	(w)	228	240	288	480	576
	Qty		2	2	2	2	2
Fan Blower	Qty		4	4	4	4	4
	Size (Dia x L)	(mm)	160 X 200	160 x 200	160 x 200	180 x 200	180 x 200
	Fan Blower Type		Double Inlet Forward Curved Centrifugal Fan Blower				
Chilled Water Connection		(inch)	3/4" MPT				
Drainage Connection		(inch)	3/4" MPT				
Net Dimension <sup>4</sup>	L x W x H	(mm)	660 x 1510 x 295	660 x 1690 x 295	660 x 1870 x 295	660 x 1870 x 395	
Packing Dimension <sup>4</sup>	L x W x H	(mm)	680 x 1580 x 365	680 x 1760 x 365	680 x 1940 x 365	730 x 1900 x 430	
Net Weight <sup>5</sup>	4 Row Coil	(kg)	75.0	85.5	89.0	92.0	96.0
	5 Row Coil	(kg)	79.0	90.0	93.5	98.0	104.0
	6 Row Coil	(kg)	83.0	94.5	98.0	104.0	112.0

**NOTES**

- (1) Unit Model differs in the extended letters indicating different cabinet construction, as per "unit model identification".
- (2) Unit noise level and fan motor output are stated based on 4-row cooling coil, and can be different for units with other cooling coils.
- (3) 1/2' tubing coil are available for all models with different coil sizes.
- (4) Net Dimension are same for single skin and double skin unit.
- (5) Net weight stated are for single skin cabinet structure units with Aluminum Frame, and will be different for double skin units. Please add 3kg onto these weights in calculating the shipping weights.

**NOTES**

- (1) Unit Model differs in the extended letters indicating different cabinet construction, as per "unit model identification".
- (2) Unit noise level and fan motor output are stated based on 4-row cooling coil, and can be different for units with other cooling coils.
- (3) 1/2' tubing coil are available for all models with different coil sizes.
- (4) Net Dimension are same for single skin and double skin unit.
- (5) Net weight stated are for single skin cabinet structure units with Aluminum Frame, and will be different for double skin units. Please add 3kg onto these weights in calculating the shipping weights.



UNIT MODEL	A (mm)	B (mm)	C (mm)	D (mm)	E (mm)
HDFC-02F1SA/DA	830	810	660	640	295
HDFC-03F1SA/DA	830	810	660	640	295
HDFC-04F1SA/DA	830	810	660	640	295
HDFC-05F1SA/DA	1080	1060	660	640	295
HDFC-06F1SA/DA	1080	1060	660	640	295
HDFC-08F1SA/DA	1340	1320	660	640	295
HDFC-10F1SA/DA	1510	1490	660	640	295
HDFC-12F1SA/DA	1690	1670	660	640	295
HDFC-14F1SA/DA	1870	1850	660	640	295
HDFC-18F1SA/DA	1870	1850	690	670	395
HDFC-20F1SA/DA	1870	1850	690	670	395

Unit Model		VDFC-02F1	VDFC-03F1	VDFC-04F1	VDFC-05F1	VDFC-06F1	
<b>Unit Performance</b>							
Nom. Airflow Rate	High	(L/S)	95	142	189	236	284
	Medium		86	131	175	219	264
	Low		78	117	156	195	234
External Static Pressure		(Pa)	Free Blow				
Noise Level <sup>1</sup>	High	dB(A)	<45	<46	<50	<48	<49
	Medium		<43	<44	<47	<45	<47
	Low		<40	<41	<45	<44	<44
<b>Physical Data</b>							
Cooling Coil Size <sup>2</sup>	Fin Height	(mm)	152	152	203	152	203
	Fin Length	(mm)	610	610	610	864	864
	Coil Style		3/8" OD Copper Tube + Hydrophilic Aluminum Fins 12 FPI				
	Max. Working Pre		20.0 Bar				
Power Supply			220-240V/1PH/50HZ				
Fan Motor	Motor Type		3-Speed Fan Motor				
	Output <sup>1</sup>	(w)	30	35	40	50	60
	Qty		1	1	1	1	1
Fan Blower	Qty		1	1	1	2	2
	Size (Dia x L)	(mm)	160 X 200	160 x 200	160 x 200	160 x 200	160 x 200
	Fan Blower Type		Double Inlet Forward Curved Centrifugal Fan Blower				
Chilled Water Connection		(inch)	1/2"MPT				
Drainage Connection		(inch)	3/4"MPT				
Standard Dimension <sup>3</sup>	L x W x H	(mm)	878 x 295 x 593			1132 x 295 x 593	
Packing Dimension <sup>3</sup>	L x W x H	(mm)	940 x 320 x 660			1190 x 320 x 660	
Net Weight <sup>4</sup>	4 Row Coil	(kg)	31.0	31.5	36.5	43.5	48.0
	5 Row Coil	(kg)	32.0	32.5	39.0	46.0	50.0
	6 Row Coil	(kg)	33.0	34.0	42.0	48.0	52.0



DECORATIVE FAN COIL UNIT

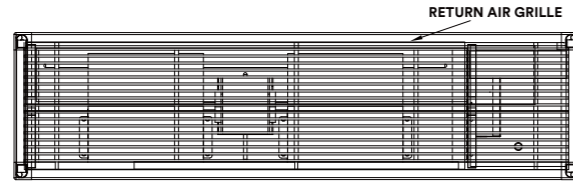
Unit Model		VDFC-08F1	VDFC-10F1	VDFC-12F1	VDFC-14F1	
<b>Unit Performance</b>						
Nom. Airflow Rate	High	(L/S)	378	472	572	667
	Medium		353	442	503	586
	Low		311	389	453	528
External Static Pressure		(Pa)	Free Blow			
Noise Level <sup>1</sup>	High	dB(A)	<53	<49	<51	<53
	Medium		<50	<48	<49	<50
	Low		<48	<46	<47	<47
<b>Physical Data</b>						
Cooling Coil Size <sup>2</sup>	Fin Height	(mm)	203	203	203	203
	Fin Length	(mm)	1118	1295	1473	1651
	Coil Style		3/8" OD Copper Tube + Hydrophilic Aluminum Fins 12 FPI			
	Max. Working Pre		20.0 Bar			
Power Supply			220-240V/1PH/50HZ			
Fan Motor	Motor Type		3-Speed Fan Motor			
	Output <sup>1</sup>	(w)	80	50 + 50	50 + 50	60 + 60
	Qty		1	2	2	2
Fan Blower	Qty		2	4	4	4
	Size (Dia x L)	(mm)	160 X 200	160 x 160	160 x 200	160 x 200
	Fan Blower Type		Double Inlet Forward Curved Centrifugal Fan Blower			
Chilled Water Connection		(inch)	1/2"MPT	3/4"MPT		
Drainage Connection		(inch)	3/4"MPT			
Standard Dimension <sup>3</sup>	L x W x H	(mm)	1385 x 295 x 593	1565 x 295 x 593	1740 x 295 x 593	1930 x 295 x 593
Packing Dimension <sup>3</sup>	L x W x H	(mm)	1445 x 320 x 660	1625 x 320 x 660	1800 x 320 x 660	1980 x 320 x 660
Net Weight <sup>4</sup>	4 Row Coil	(kg)	63.0	74.0	86.0	91.0
	5 Row Coil	(kg)	67.5	79.0	91.0	96.0
	6 Row Coil	(kg)	72.0	84.0	95.0	100.0

**NOTES**

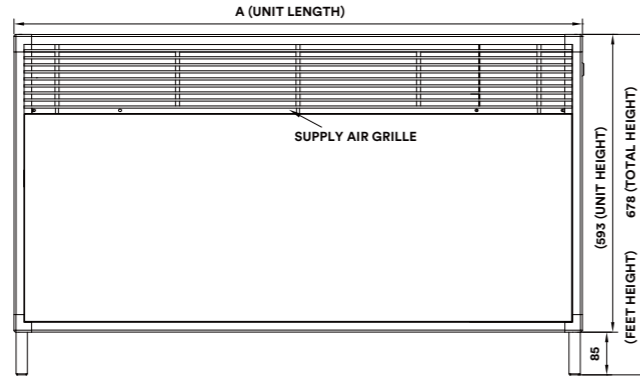
- (1) Unit noise level & fan motor output are stated based on 4-row cooling coil, and can be different for units with other size cooling coils.
- (2) 1/2" OD copper tube cooling coils are also available for all models.
- (3) Standard dimension and packing dimension are stated based on 15 mm thick closed cell foam insulation.
- (4) Net weights are stated for double skin units; Please add 3kg onto net weight in calculating the shipping data.

DECORATIVE FAN COIL UNIT

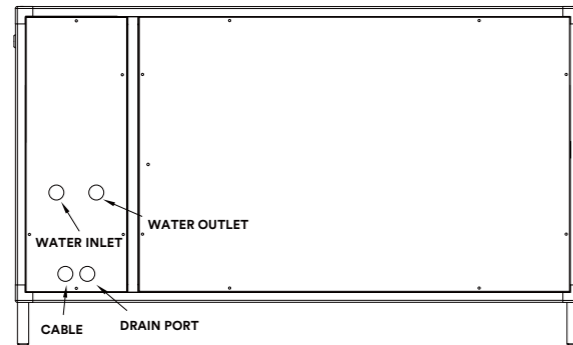
BOTTOM VIEW



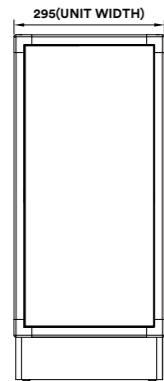
FRONT VIEW



BACK VIEW



SIDE VIEW



DECORATIVE FAN COIL UNIT

UNIT MODEL	A (mm)
VDFC-02F1	878
VDFC-03F1	878
VDFC-04F1	878
VDFC-05F1	1132
VDFC-06F1	1132
VDFC-08F1	1385
VDFC-10F1	1565
VDFC-12F1	1740
VDFC-14F1	1930

Unit Model	Rows of Coil	Fan Speed	Air on DBT/WBT 23°C/16°C				Air on DBT/WBT 24°C/18°C			
			Standard Application EWT/LWT 5.5°C/11.5°C		High Delta T Application EWT/LWT 5.5°C/14.5°C		Standard Application EWT/LWT 5.5°C/11.5°C		High Delta T Application EWT/LWT 5.5°C/14.5°C	
			T.C.	S.C.	T.C.	S.C.	T.C.	S.C.	T.C.	S.C.
			(kw)	(kw)	(kw)	(kw)	(kw)	(kw)	(kw)	(kw)
HDFC-02F	4	High	1.7	1.4	1.3	1.2	2.2	1.4	1.7	1.2
		Medium	1.6	1.3	1.2	1.1	2.0	1.3	1.6	1.1
		Low	1.5	1.2	1.2	1.0	1.9	1.2	1.5	1.0
	5	High	1.8	1.4	1.4	1.3	2.3	1.5	1.8	1.3
		Medium	1.7	1.3	1.3	1.2	2.2	1.4	1.7	1.2
		Low	1.6	1.2	1.2	1.1	2.0	1.3	1.6	1.1
	6	High	2.1	1.6	1.7	1.4	2.7	1.7	2.3	1.5
		Medium	1.9	1.5	1.6	1.3	2.5	1.6	2.1	1.4
		Low	1.8	1.4	1.9	1.2	2.3	1.4	2.0	1.3
HDFC-03F	4	High	2.2	1.8	1.7	1.7	2.8	1.9	2.2	1.6
		Medium	2.1	1.7	1.6	1.6	2.7	1.8	2.1	1.5
		Low	1.9	1.6	1.5	1.4	2.5	1.7	1.9	1.4
	5	High	2.4	2.0	1.9	1.8	3.1	2.1	2.4	1.8
		Medium	2.3	1.9	1.8	1.7	2.9	1.9	2.3	1.7
		Low	2.1	1.7	1.7	1.5	2.7	1.8	2.1	1.5
	6	High	2.7	2.2	2.3	2.0	3.5	2.3	3.0	2.0
		Medium	2.5	2.0	2.2	1.9	3.3	2.1	2.8	1.9
		Low	2.3	1.8	2.0	1.7	3.0	1.9	2.6	1.8
HDFC-04F	4	High	2.7	2.4	2.5	2.3	3.5	2.4	3.1	2.2
		Medium	2.5	2.2	2.3	2.1	3.3	2.3	3.0	2.1
		Low	2.4	2.0	2.2	2.0	3.1	2.1	2.8	2.0
	5	High	3.2	2.6	2.9	2.5	4.1	2.7	3.7	2.6
		Medium	3.0	2.5	2.7	2.4	3.9	2.6	3.5	2.4
		Low	2.8	2.3	2.5	2.2	3.6	2.4	3.2	2.2
	6	High	3.6	2.9	3.2	2.7	4.7	3.0	3.9	2.7
		Medium	3.4	2.7	3.1	2.6	4.4	2.8	3.7	2.5
		Low	3.1	2.5	2.8	2.3	4.0	2.6	3.4	2.3
HDFC-05F	4	High	3.4	2.9	2.9	2.7	4.4	3.0	3.7	2.7
		Medium	3.2	2.8	2.8	2.6	4.2	2.8	3.5	2.6
		Low	3.0	2.5	2.6	2.4	3.9	2.6	3.3	2.4
	5	High	4.0	3.3	3.2	3.0	4.7	3.2	4.1	2.9
		Medium	3.8	3.1	3.1	2.8	4.5	3.0	3.9	2.8
		Low	3.5	2.8	2.8	2.5	4.1	2.8	3.6	2.6
	6	High	4.0	3.4	3.7	3.2	5.2	3.5	4.7	3.2
		Medium	3.8	3.2	3.5	3.0	4.9	3.3	4.4	3.1
		Low	3.5	2.9	3.2	2.8	4.5	3.0	4.1	2.8

DECORATIVE FAN COIL UNIT

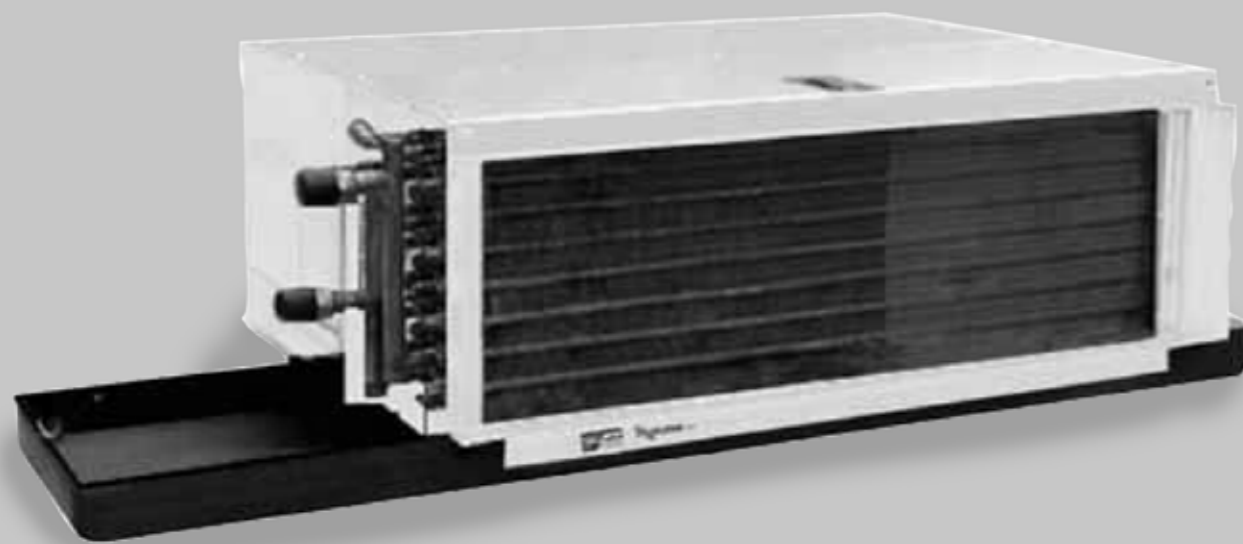
Unit Model	Rows of Coil	Fan Speed	Air on DBT/WBT 23°C/16°C				Air on DBT/WBT 24°C/18°C			
			Standard Appli- cation EWT/LWT 5.5°C/11.5°C		High Delta T Appli- cation EWT/LWT 5.5°C/14.5°C		Standard Appli- cation EWT/LWT 5.5°C/11.5°C		High Delta T Appli- cation EWT/LWT 5.5°C/14.5°C	
			T.C.	S.C.	T.C.	S.C.	T.C.	S.C.	T.C.	S.C.
			(kw)	(kw)	(kw)	(kw)	(kw)	(kw)	(kw)	(kw)
HDFC-06F	4	High	4.2	3.6	3.8	3.4	5.5	3.7	4.2	3.2
		Medium	4.0	3.4	3.6	3.2	5.3	3.5	4.0	3.0
		Low	3.7	3.1	3.4	3.0	4.9	3.2	3.7	2.8
	5	High	5.0	4.1	4.0	3.6	6.4	4.2	5.1	3.6
		Medium	4.7	3.8	3.8	3.4	6.1	4.0	4.8	3.4
		Low	4.3	3.5	3.5	3.1	5.6	3.6	4.5	3.1
	6	High	5.2	4.3	4.6	4.0	6.8	4.4	5.8	4.0
		Medium	5.0	4.0	4.3	3.7	6.5	4.2	5.5	3.8
		Low	4.6	3.6	4.0	3.4	5.9	3.8	5.1	3.4
HDFC-08F	4	High	5.6	4.8	4.7	4.4	7.3	4.9	5.9	4.3
		Medium	5.4	4.5	4.5	4.2	7.0	4.7	5.6	4.1
		Low	4.9	4.1	4.1	3.8	6.4	4.3	5.2	3.8
	5	High	6.6	5.4	5.5	4.9	8.5	5.6	7.0	4.9
		Medium	6.3	5.1	5.3	4.7	8.2	5.3	6.7	4.7
		Low	5.8	4.6	4.8	4.2	7.5	4.8	6.2	4.3
	6	High	7.2	5.7	6.3	5.3	9.3	6.0	7.4	5.2
		Medium	6.9	5.4	5.9	5.0	8.9	5.7	7.1	4.9
		Low	6.3	4.9	5.4	4.6	8.1	5.1	6.5	4.5
HDFC-10F	4	High	7.0	5.9	5.8	5.4	8.0	6.2	7.3	5.4
		Medium	6.7	5.6	5.6	5.2	7.7	6.0	7.1	5.1
		Low	6.2	5.1	5.2	4.7	7.1	5.4	6.5	4.7
	5	High	8.0	6.6	6.9	6.1	9.1	6.9	8.4	6.0
		Medium	7.6	6.3	6.6	5.8	8.7	6.6	8.1	5.7
		Low	7.0	5.7	6.0	5.3	8.0	6.0	7.4	5.2
	6	High	8.9	7.1	7.3	6.4	9.9	7.4	9.3	6.5
		Medium	8.6	6.8	7.0	6.1	9.4	7.0	8.9	6.2
		Low	7.8	6.1	6.4	5.5	8.6	6.3	8.2	5.6
HDFC-12F	4	High	8.4	7.1	7.0	6.5	10.1	7.0	8.5	6.3
		Medium	7.8	6.5	6.5	6.0	9.3	6.4	7.9	5.8
		Low	7.3	6.0	6.1	5.5	8.7	5.9	7.4	5.4
	5	High	9.6	7.9	8.1	7.2	11.5	7.8	10.2	7.2
		Medium	8.9	7.2	7.4	6.6	10.5	7.1	9.4	6.6
		Low	8.2	6.6	6.9	6.0	9.8	6.5	8.8	6.1
	6	High	10.4	8.4	8.9	7.8	13.5	8.8	11.3	7.8
		Medium	9.5	7.6	8.1	7.0	12.4	7.9	10.4	7.1
		Low	8.8	7.0	7.5	6.4	11.5	7.3	9.7	6.6

DECORATIVE FAN COIL UNIT

Unit Model	Rows of Coil	Fan Speed	Air on DBT/WBT 23°C/16°C				Air on DBT/WBT 24°C/18°C			
			Standard Appli- cation EWT/LWT 5.5°C/11.5°C		High Delta T Appli- cation EWT/LWT 5.5°C/14.5°C		Standard Appli- cation EWT/LWT 5.5°C/11.5°C		High Delta T Appli- cation EWT/LWT 5.5°C/14.5°C	
			T.C.	S.C.	T.C.	S.C.	T.C.	S.C.	T.C.	S.C.
			(kw)	(kw)	(kw)	(kw)	(kw)	(kw)	(kw)	(kw)
HDFC-14F	4	High	8.5	7.6	7.9	7.5	11.0	7.7	10.0	7.4
		Medium	7.9	7.0	7.3	6.8	10.2	7.1	9.2	6.7
		Low	7.4	6.5	6.9	6.3	9.6	6.6	8.7	6.3
	5	High	9.8	8.5	9.2	8.3	12.6	8.7	11.6	8.3
		Medium	9.0	7.7	8.4	7.5	11.6	7.9	10.7	7.6
		Low	8.4	7.1	7.8	6.9	10.9	7.3	10.0	7.0
	6	High	11.6	9.5	10.4	9.1	15.0	9.8	12.6	8.9
		Medium	10.6	8.6	9.5	8.2	13.7	8.9	11.6	8.1
		Low	9.8	7.9	8.8	7.5	12.8	8.2	10.8	7.4
HDFC-18F	4	High	12.0	10.5	9.0	8.9	15.6	10.7	11.8	9.2
		Medium	11.1	9.5	8.7	8.6	14.3	9.7	10.9	8.4
		Low	9.6	8.1	7.6	7.2	12.5	8.3	9.5	7.1
	5	High	14.7	12.1	12.0	10.9	17.9	12.0	15.0	10.8
		Medium	13.4	10.9	10.9	9.8	16.3	10.8	13.9	9.8
		Low	11.5	9.1	9.4	8.2	14.1	9.2	12.0	8.3
	6	High	16.0	12.9	13.1	11.6	19.5	12.9	16.6	11.7
		Medium	14.6	11.6	11.9	10.4	17.7	11.6	15.2	10.5
		Low	12.4	9.6	10.2	8.7	15.2	9.7	13.0	8.8
HDFC-20F	4	High	14.9	13.1	12.8	12.2	19.2	13.3	16.1	12.0
		Medium	13.7	11.8	11.8	11.0	17.7	12.1	14.8	10.9
		Low	11.8	10.0	10.2	9.3	15.4	10.3	12.9	9.3
	5	High	18.0	14.9	14.7	13.5	21.9	14.8	18.4	13.4
		Medium	16.5	13.5	13.4	12.1	20.0	13.4	16.9	12.1
		Low	14.1	11.3	11.5	10.1	17.2	11.3	14.7	10.2
	6	High	19.9	16.1	17.0	14.8	24.1	16.0	20.5	14.5
		Medium	18.0	14.4	15.4	13.3	21.9	14.4	18.7	13.0
		Low	15.3	12.0	13.1	11.0	18.7	12.1	16.0	10.9

DECORATIVE FAN COIL UNIT

# CONCEALED DUCTED FN COIL UNIT (LOW ESP)



## SPECIFICATIONS

### CABINET

Single skin: Casing made of 1.2mm powder coated galvanized steel sheets, internally insulated with 15mm closed cell foam insulation.

Double skin: Casing made of 1.0mm outer and 0.6mm inner powder coated galvanized steel sheets, with 15mm thick closed cell foam insulation

**Option: Return air spigot with bottom withdrawal air filter (additional cost).**

### FAN SECTION

Fan Motor: 3 speed fan motors with permanent split capacitor, thermal overload protection, and lifetime lubricated ball bearing.

Fan Blower: DIDW forward curved centrifugal fan blower made of galvanized steel directly driven by fan motors.

All fan blowers are statically and dynamically balanced.

### COIL SECTION

Cooling coils made out of 10mm or 12mm OD copper tubes mechanically bonded into aluminum fins, with copper header; fin thickness 0.1mm, with fin spacing 2.0mm (12FPI). Cooling coils are ARI rated.

### DRAIN PAN

Drain pan made of powder coated galvanized steel along with auxiliary drain pan extending under valve package, insulated with closed cell foam.

**Option: Drain pan made of stainless steel (additional cost).**

### FILTER SECTION

12mm thick aluminum return air filter assembled in aluminum frames provided for easy withdrawal and replacement.

### HEATER BATTERY

PTC Electrical Heater Battery is supplied with inbuilt thermal protection for heating application on special requirement (additional cost).

Unit Model		HCFC-02L1	HCFC-03L1	HCFC-04L1	HCFC-05L1	HCFC-06L1	
<b>Unit Performance</b>							
Nom. Airflow Rate	High	(L/S)	95	142	189	236	284
	Medium	(L/S)	86	131	175	219	264
	Low	(L/S)	78	117	156	195	234
External Static Pressure <sup>1</sup>		(Pa)	Free Blow				
Noise Level <sup>2</sup>	High	dB(A)	<45	<47	<51	<49	<51
	Medium	dB(A)	<43	<45	<49	<47	<48
	Low	dB(A)	<40	<42	<47	<44	<46
<b>Physical Data</b>							
Cooling Coil Size <sup>3</sup>	Fin Height	(mm)	152	152	203	152	203
	Fin Length	(mm)	610	610	610	864	864
	Coil Style	3/8" OD Copper Tube + Hydrophilic Aluminum Fins 12 FPI					
	Max. Working Pre	20.0 Bar					
Power Supply		220-240V/1PH/50HZ					
Fan Motor	Motor Type		3-Speed Fan Motor				
	Output <sup>2</sup>	(w)	30	40	50	60	80
	Qty		1	1	1	1	1
Fan Blower	Qty		1	1	1	2	2
	Size (Dia x L)	(mm)	160 X 160	160 x 200	160 x 200	160 x 200	160 x 200
	Fan Blower Type		Double Inlet Forward Curved Centrifugal Fan Blower				
Chilled Water Connection	3 Row Coil	(inch)	Inner 1/2" FPT - Outer 3/4" MPT				
Drainage Connection		(inch)	3/4" MPT				
Standard Dimension <sup>4</sup>		(mm)	557 x 962 x 260		557 x 1212 x 260		
Packing Dimension <sup>4</sup>		(mm)	570 x 995 x 270		570 x 1235 x 270		
Net Weight <sup>5</sup>	4 Row Coil	(kg)	25.0	26.0	28.0	34.0	37.0
	5 Row Coil	(kg)	26.0	27.0	30.0	36.0	39.0
	6 Row Coil	(kg)	27.0	28.0	31.0	38.0	41.0

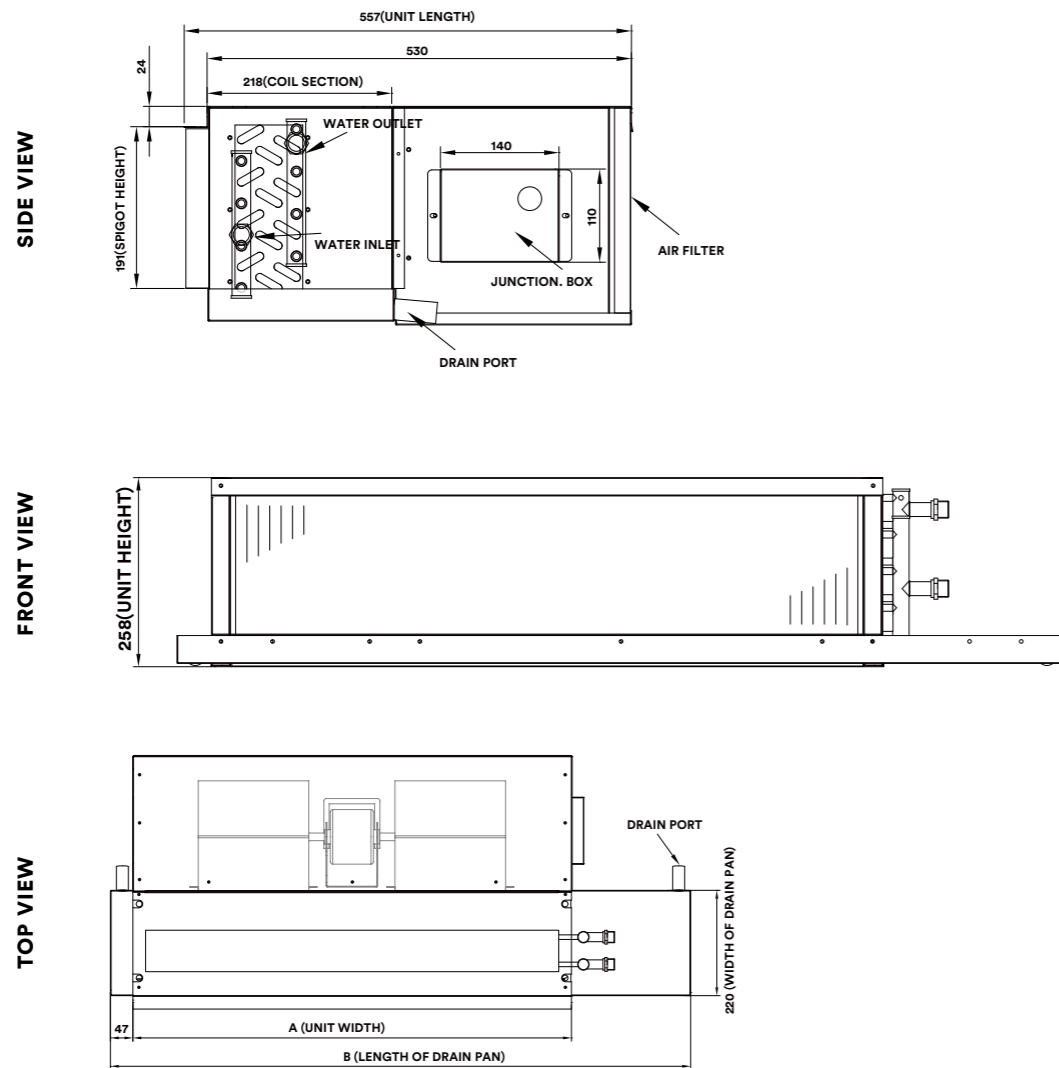
**NOTES**

- (1) External Static Pressure are measured based on Medium dirty polyester air filter.
- (2) Unit noise level and fan motor output are stated based on 4-row cooling coil, and can be different for units with other size cooling coils.
- (3) 1/2' OD copper tube cooling coils are available with all models.
- (4) Standard dimension and packing dimension are stated based on 15mm thick closed cell foam insulation.
- (5) Please add 3kg onto net weights in calculating the shipping weights.

Unit Model		HCFC-08L1	HCFC-10L1	HCFC-12L1	HCFC-14L1	
<b>Unit Performance</b>						
Nom. Airflow Rate	High	(L/S)	378	472	572	667
	Medium	(L/S)	353	442	503	586
	Low	(L/S)	311	389	453	528
External Static Pressure <sup>1</sup>		(Pa)	Free Blow			
Noise Level <sup>2</sup>	High	dB(A)	<53	<51	<53	<54
	Medium	dB(A)	<51	<48	<51	<52
	Low	dB(A)	<50	<46	<48	<49
<b>Physical Data</b>						
Cooling Coil Size <sup>3</sup>	Fin Height	(mm)	203	203	203	203
	Fin Length	(mm)	1118	1295	1473	1651
	Coil Style	3/8" OD Copper Tube + Hydrophilic Aluminum Fins 12 FPI				
	Max. Working Pre	20.0 Bar				
Power Supply		220-240V/1PH/50HZ				
Fan Motor	Motor Type		3-Speed Fan Motor			
	Output <sup>2</sup>	(w)	100	60 + 60	80 + 80	100 + 100
	Qty		1	2	2	2
Fan Blower	Qty		2	4	4	4
	Size (Dia x L)	(mm)	160 X 200	160 x 200	160 x 200	160 x 200
	Fan Blower Type		Double Inlet Forward Curved Centrifugal Fan Blower			
Chilled Water Connection	3 Row Coil	(inch)	Inner 1/2" MPT - Outer 3/4" MPT	Inner 3/4" MPT - Outer 1" MPT		
Drainage Connection		(inch)	3/4" MPT			
Standard Dimension <sup>4</sup>		(mm)	557 x 1467 x 260	557 x 1647 x 260	557 x 1827 x 260	557 x 1997 x 260
Packing Dimension <sup>4</sup>		(mm)	570 x 1490 x 270	570 x 1670 x 270	570 x 1850 x 270	570 x 2020 x 270
Net Weight <sup>5</sup>	4 Row Coil	(kg)	44.0	52.0	58.0	64.0
	5 Row Coil	(kg)	47.0	56.0	63.0	69.0
	6 Row Coil	(kg)	49.0	60.0	68.0	75.0

**NOTES**

- (1) External Static Pressure are measured based on Medium dirty polyester air filter.
- (2) Unit noise level and fan motor output are stated based on 4-row cooling coil, and can be different for units with other size cooling coils.
- (3) 1/2' OD copper tube cooling coils are available with all models.
- (4) Standard dimension and packing dimension are stated based on 15mm thick closed cell foam insulation.
- (5) Please add 3kg onto net weights in calculating the shipping weights.



UNIT MODEL	A (mm)	B (mm)
HCFC-02L1	665	962
HCFC-03L1	665	962
HCFC-04L1	665	962
HCFC-05L1	915	1212
HCFC-06L1	915	1212
HCFC-08L1	1170	1467
HCFC-10L1	1350	1647
HCFC-12L1	1530	1827
HCFC-14L1	1700	1997

CONCEALED DUCTED FAN COIL UNIT (LOW ESP)

Unit Model	Rows of Coil	Fan Speed	Air on DBT/WBT 23°C/16°C				Air on DBT/WBT 24°C/18°C			
			Standard Appli- cation EWT/LWT 5.5°C/11.5°C		High Delta T Appli- cation EWT/LWT 5.5°C/14.5°C		Standard Appli- cation EWT/LWT 5.5°C/11.5°C		High Delta T Appli- cation EWT/LWT 5.5°C/14.5°C	
			T.C. (kw)	S.C. (kw)	T.C. (kw)	S.C. (kw)	T.C. (kw)	S.C. (kw)	T.C. (kw)	S.C. (kw)
HCFC-02L1	4	High	1.7	1.4	1.3	1.2	2.2	1.4	1.7	1.2
		Medium	1.6	1.3	1.2	1.1	2.0	1.3	1.6	1.1
		Low	1.5	1.2	1.2	1.0	1.9	1.2	1.5	1.0
	5	High	1.8	1.4	1.4	1.3	2.3	1.5	1.8	1.3
		Medium	1.7	1.3	1.3	1.2	2.2	1.4	1.7	1.2
		Low	1.6	1.2	1.2	1.1	2.0	1.3	1.6	1.1
6	High	2.1	1.6	1.7	1.4	2.7	1.7	2.3	1.5	
	Medium	1.9	1.5	1.6	1.3	2.5	1.6	2.1	1.4	
	Low	1.8	1.4	1.5	1.2	2.3	1.4	2.0	1.3	
HCFC-03L1	4	High	2.2	1.8	1.7	1.7	2.8	1.9	2.2	1.6
		Medium	2.1	1.7	1.6	1.6	2.7	1.8	2.1	1.5
		Low	1.9	1.6	1.5	1.4	2.5	1.7	1.9	1.4
	5	High	2.4	2.0	1.9	1.8	3.1	2.1	2.4	1.8
		Medium	2.3	1.9	1.8	1.7	2.9	1.9	2.3	1.7
		Low	2.1	1.7	1.7	1.5	2.7	1.8	2.1	1.5
6	High	2.7	2.2	2.3	2.0	3.5	2.3	3.0	2.0	
	Medium	2.5	2.0	2.2	1.9	3.3	2.1	2.8	1.9	
	Low	2.3	1.8	2.0	1.7	3.0	1.9	2.6	1.8	
HCFC-04L1	4	High	2.7	2.4	2.5	2.3	3.5	2.4	3.1	2.2
		Medium	2.5	2.2	2.3	2.1	3.3	2.3	3.0	2.1
		Low	2.4	2.0	2.2	2.0	3.1	2.1	2.8	2.0
	5	High	3.2	2.6	2.9	2.5	4.1	2.7	3.7	2.6
		Medium	3.0	2.5	2.7	2.4	3.9	2.6	3.5	2.4
		Low	2.8	2.3	2.5	2.2	3.6	2.4	3.2	2.2
6	High	3.6	2.9	3.2	2.7	4.7	3.0	3.9	2.7	
	Medium	3.4	2.7	3.1	2.6	4.4	2.8	3.7	2.5	
	Low	3.1	2.5	2.8	2.3	4.0	2.6	3.4	2.3	
HCFC-05L1	4	High	3.4	2.9	2.9	2.7	4.4	3.0	3.7	2.7
		Medium	3.2	2.8	2.8	2.6	4.2	2.8	3.5	2.6
		Low	3.0	2.5	2.6	2.4	3.9	2.6	3.3	2.4
	5	High	4.0	3.3	3.2	3.0	4.7	3.2	4.1	2.9
		Medium	3.8	3.1	3.1	2.8	4.5	3.0	3.9	2.8
		Low	3.5	2.8	2.8	2.5	4.1	2.8	3.6	2.6
6	High	4.0	3.4	3.7	3.2	5.2	3.5	4.7	3.2	
	Medium	3.8	3.2	3.5	3.0	4.9	3.3	4.4	3.1	
	Low	3.5	2.9	3.2	2.8	4.5	3.0	4.1	2.8	

CONCEALED DUCTED FAN COIL UNIT (LOW ESP)



Unit Model	Rows of Coil	Fan Speed	Air on DBT/WBT 23°C/16°C				Air on DBT/WBT 24°C/18°C			
			Standard Application EWT/LWT 5.5°C/11.5°C		High Delta T Application EWT/LWT 5.5°C/14.5°C		Standard Application EWT/LWT 5.5°C/11.5°C		High Delta T Application EWT/LWT 5.5°C/14.5°C	
			T.C.	S.C.	T.C.	S.C.	T.C.	S.C.	T.C.	S.C.
			(kw)	(kw)	(kw)	(kw)	(kw)	(kw)	(kw)	(kw)
HCFC-06L1	4	High	4.2	3.6	3.8	3.4	5.5	3.7	4.2	3.2
		Medium	4.0	3.4	3.6	3.2	5.3	3.5	4.0	3.0
		Low	3.7	3.1	3.4	3.0	4.9	3.2	3.7	2.8
	5	High	5.0	4.1	4.0	3.6	6.4	4.2	5.1	3.6
		Medium	4.7	3.8	3.8	3.4	6.1	4.0	4.8	3.4
		Low	4.3	3.5	3.5	3.1	5.6	3.6	4.5	3.1
	6	High	5.2	4.3	4.6	4.0	6.8	4.4	5.8	4.0
		Medium	5.0	4.0	4.3	3.7	6.5	4.2	5.5	3.8
		Low	4.6	3.6	4.0	3.4	5.9	3.8	5.1	3.4
HCFC-08L1	4	High	5.6	4.8	4.7	4.4	7.3	4.9	5.9	4.3
		Medium	5.4	4.5	4.5	4.2	7.0	4.7	5.6	4.1
		Low	4.9	4.1	4.1	3.8	6.4	4.3	5.2	3.8
	5	High	6.6	5.4	5.5	4.9	8.5	5.6	7.0	4.9
		Medium	6.3	5.1	5.3	4.7	8.2	5.3	6.7	4.7
		Low	5.8	4.6	4.8	4.2	7.5	4.8	6.2	4.3
	6	High	7.2	5.7	6.3	5.3	9.3	6.0	7.4	5.2
		Medium	6.9	5.4	5.9	5.0	8.9	5.7	7.1	4.9
		Low	6.3	4.9	5.4	4.6	8.1	5.1	6.5	4.5
HCFC-10L1	4	High	7.0	5.9	5.8	5.4	8.0	6.2	7.3	5.4
		Medium	6.7	5.6	5.6	5.2	7.7	6.0	7.1	5.1
		Low	6.2	5.1	5.2	4.7	7.1	5.4	6.5	4.7
	5	High	8.0	6.6	6.9	6.1	9.1	6.9	8.4	6.0
		Medium	7.6	6.3	6.6	5.8	8.7	6.6	8.1	5.7
		Low	7.0	5.7	6.0	5.3	8.0	6.0	7.4	5.2
	6	High	8.9	7.1	7.3	6.4	9.9	7.4	9.3	6.5
		Medium	8.6	6.8	7.0	6.1	9.4	7.0	8.9	6.2
		Low	7.8	6.1	6.4	5.5	8.6	6.3	8.2	5.6

Unit Model	Rows of Coil	Fan Speed	Air on DBT/WBT 23°C/16°C				Air on DBT/WBT 24°C/18°C			
			Standard Application EWT/LWT 5.5°C/11.5°C		High Delta T Application EWT/LWT 5.5°C/14.5°C		Standard Application EWT/LWT 5.5°C/11.5°C		High Delta T Application EWT/LWT 5.5°C/14.5°C	
			T.C.	S.C.	T.C.	S.C.	T.C.	S.C.	T.C.	S.C.
			(kw)	(kw)	(kw)	(kw)	(kw)	(kw)	(kw)	(kw)
HCFC-12L1	4	High	8.4	7.1	7.0	6.5	10.1	7.0	8.5	6.3
		Medium	7.8	6.5	6.5	6.0	9.3	6.4	7.9	5.8
		Low	7.3	6.0	6.1	5.5	8.7	5.9	7.4	5.4
	5	High	9.6	7.9	8.1	7.2	11.5	7.8	10.2	7.2
		Medium	8.9	7.2	7.4	6.6	10.5	7.1	9.4	6.6
		Low	8.2	6.6	6.9	6.0	9.8	6.5	8.8	6.1
	6	High	10.4	8.4	8.9	7.8	13.5	8.8	11.3	7.8
		Medium	9.5	7.6	8.1	7.0	12.4	7.9	10.4	7.1
		Low	8.8	7.0	7.5	6.4	11.5	7.3	9.7	6.6
HCFC-14L1	4	High	8.5	7.6	7.9	7.5	11.0	7.7	10.0	7.4
		Medium	7.9	7.0	7.3	6.8	10.2	7.1	9.2	6.7
		Low	7.4	6.5	6.9	6.3	9.6	6.6	8.7	6.3
	5	High	9.8	8.5	9.2	8.3	12.6	8.7	11.6	8.3
		Medium	9.0	7.7	8.4	7.5	11.6	7.9	10.7	7.6
		Low	8.4	7.1	7.8	6.9	10.9	7.3	10.0	7.0
	6	High	11.6	9.5	10.4	9.1	15.0	9.8	12.6	8.9
		Medium	10.6	8.6	9.5	8.2	13.7	8.9	11.6	8.1
		Low	9.8	7.9	8.8	7.5	12.8	8.2	10.8	7.4



# CONCEALED DUCTED FN COIL UNIT (MEDIUM ESP)



## SPECIFICATIONS

### CABINET

Single Skin: Casing made of 1.2mm powder coated galvanized steel sheets, internally insulated with 15mm closed cell foam insulation.

Double Skin: Casing made of 1.0mm outer and 0.6mm inner powder coated galvanized steel sheets, with 15mm thick closed cell foam insulation.

Option 1: 25mm thick closed cell foam insulation (additional cost).

Option 2: For Hygienic unit, inner stainless steel sheet (additional cost).

Option 3: Return air spigot with bottom withdrawal air filter (additional cost).

### FAN SECTION

Fan Motor: 3 speed fan motors with permanent split capacitor, thermal overload protection, and lifetime lubricated ball bearing.

Fan Blower: DIDW forward curved centrifugal fan blower made of galvanized steel directly driven by fan motors.

All fan blowers are statically and dynamically balanced.

### COIL SECTION

Cooling coils made out of 10mm or 12mm OD copper tubes mechanically bonded into aluminum fins, with copper header; fin thickness 0.1mm, with fin spacing 2.0mm (12FPI). Cooling coils are ARI rated.

### DRAIN PAN

Drain pan made of powder coated galvanized steel along with auxiliary drain pan extending under valve package, insulated with closed cell foam.

Option: Drain pan made of stainless steel (additional cost).

### FILTER SECTION

12mm thick aluminum return air filter assembled in aluminum frames provided for easy withdrawal and replacement.

### HEATER BATTERY

PTC Electrical Heater Battery is supplied with inbuilt thermal protection for heating application on special requirement (additional cost).

Unit Model		HCFC-02M1	HCFC-03M1	HCFC-04M1	HCFC-05M1	HCFC-06M1	HCFC-08M1	
<b>Unit Performance</b>								
Nom. Airflow Rate	High	(L/S)	95	148	196	243	319	375
	Medium	(L/S)	86	134	178	218	276	325
	Low	(L/S)	78	118	163	190	238	280
External Static Pressure <sup>1</sup>		(Pa)	Nominal 50 Pa (50 ~ 75 Pa)					
Noise Level <sup>2</sup>	High	(dB(A))	<57	<59	<60	<63	<63	<62
	Medium	(dB(A))	<55	<57	<58	<61	<60	<58
	Low	(dB(A))	<53	<56	<55	<58	<56	<55
<b>Physical Data</b>								
Cooling Coil Size <sup>3</sup>	Fin Height	(mm)	152	203	203	254	203	254
	Fin Length	(mm)	510	510	610	610	864	864
	Coil Style		3/8" OD Copper Tube + Hydrophilic Aluminum Fins 12 FPI					
	Max. Working Pre		20.0 Bar					
Power Supply			220-240V/1PH/50HZ					
Fan Motor	Motor Type		3-Speed Fan Motor					
	Output <sup>2</sup>	(w)	40	40	60	80	100	120
	Qty		1	1	1	1	1	1
Fan Blower	Qty		1	1	1	1	2	2
	Size (Dia x L)	(mm)	180 x 200	180 x 200	180 x 200	180 x 200	180 x 200	180 x 200
	Fan Blower Type		Double Inlet Forward Curved Centrifugal Fan Blower					
Chilled Water Connection		(inch)	1/2" FPT - 3/4" MPT					
Drainage Connection		(inch)	3/4" MPT					
Standard Dimension - Single Skin Unit <sup>4</sup>			590 x 820 x 315		590 x 920 x 315		590 x 1170 x 315	
Standard Dimension - Double Skin Unit <sup>5</sup>		(mm)	600 x 880 x 365		600 x 980 x 365		600 x 1230 x 365	
Packing Dimension - Single Skin Unit <sup>4</sup>			600 x 850 x 360		600 x 950 x 360		600 x 1200 x 360	
Packing Dimension - Double Skin Unit <sup>5</sup>		(mm)	615 x 910 x 410		615 x 1010 x 410		600 x 1260 x 410	
Net Weight <sup>6</sup>	4 Row Coil	(kg)	39.0	41.0	43.5	49.0	54.0	64.0
	5 Row Coil	(kg)	41.0	43.5	46.5	52.0	58.0	68.0
	6 Row Coil	(kg)	43.0	46.0	49.5	55.0	62.0	72.0

**NOTES**

- (1) External Static Pressure are measured based on Medium dirty polyester air filter.
- (2) Unit noise level and fan motor output are stated based on 4-row cooling coil, and can be different for units with other size cooling coils.
- (3) 1/2" OD copper tube cooling coils are available with all models.
- (4) Standard dimension and packing dimension for single skin unit based on 15mm thick closed cell foam insulation.
- (5) Standard dimension and packing dimension for double skin units based on 15mm thick closed cell foam insulation.
- (6) Please add 3kg onto net weights in calculating the shipping data.

Unit Model		HCFC-10M1	HCFC-12M1	HCFC-14M1	HCFC-18M1	HCFC-20M1		
<b>Unit Performance</b>								
Nom. Airflow Rate	High	(L/S)	510	604	732	880	983	
	Medium	(L/S)	445	550	650	775	875	
	Low	(L/S)	385	485	550	683	758	
External Static Pressure <sup>1</sup>		(Pa)	Nominal 50 Pa (50 ~ 75 Pa)					
Noise Level <sup>2</sup>	High	(dB(A))	<65	<64	<67	<68	<69	
	Medium	(dB(A))	<63	<62	<64	<66	<66	
	Low	(dB(A))	<62	<59	<62	<61	<62	
<b>Physical Data</b>								
Cooling Coil Size <sup>3</sup>	Fin Height	(mm)	305	305	356	356	381	
	Fin Length	(mm)	914	1067	1067	1219	1219	
	Coil Style		3/8" OD Copper Tube + Hydrophilic Aluminum Fins 12 FPI			1/2" OD Copper Tube + Hydrophilic Aluminum Fins 12 FPI		
	Max. Working Pre		20.0 Bar					
Power Supply			220-240V/1PH/50HZ					
Fan Motor	Motor Type		3-Speed Fan Motor					
	Output <sup>2</sup>	(w)	150	150	200	350	450	
	Qty		1	1	1	1	1	
Fan Blower	Qty		1	2	2	2	2	
	Size (Dia x L)	(mm)	200 x 190	200 x 190	200 x 190	200 x 190	200 x 190	
	Fan Blower Type		Double Inlet Forward Curved Centrifugal Fan Blower					
Chilled Water Connection		(inch)	1/2" FPT - 3/4" MPT		3/4" FPT - 1" MPT			
Drainage Connection		(inch)	3/4" MPT					
Standard Dimension - Single Skin Unit <sup>4</sup>			742 x 1220 x 410		742 x 1370 x 410		742 x 1523 x 475	
Standard Dimension - Double Skin Unit <sup>5</sup>		(mm)	742 x 1280 x 460		742 x 1430 x 460		742 x 1523 x 475	
Packing Dimension - Single Skin Unit <sup>4</sup>			755 x 1250 x 440		755 x 1400 x 440		755 x 1570 x 505	
Packing Dimension - Double Skin Unit <sup>5</sup>		(mm)	755 x 1310 x 505		755 x 1460 x 505		755 x 1550 x 520	
Net Weight <sup>6</sup>	4 Row Coil	(kg)	73.3	81.5	74.0	90.0	98.0	
	5 Row Coil	(kg)	78.0	87.0	80.3	97.0	106.0	
	6 Row Coil	(kg)	82.5	92.5	87.0	104.0	114.0	

**NOTES**

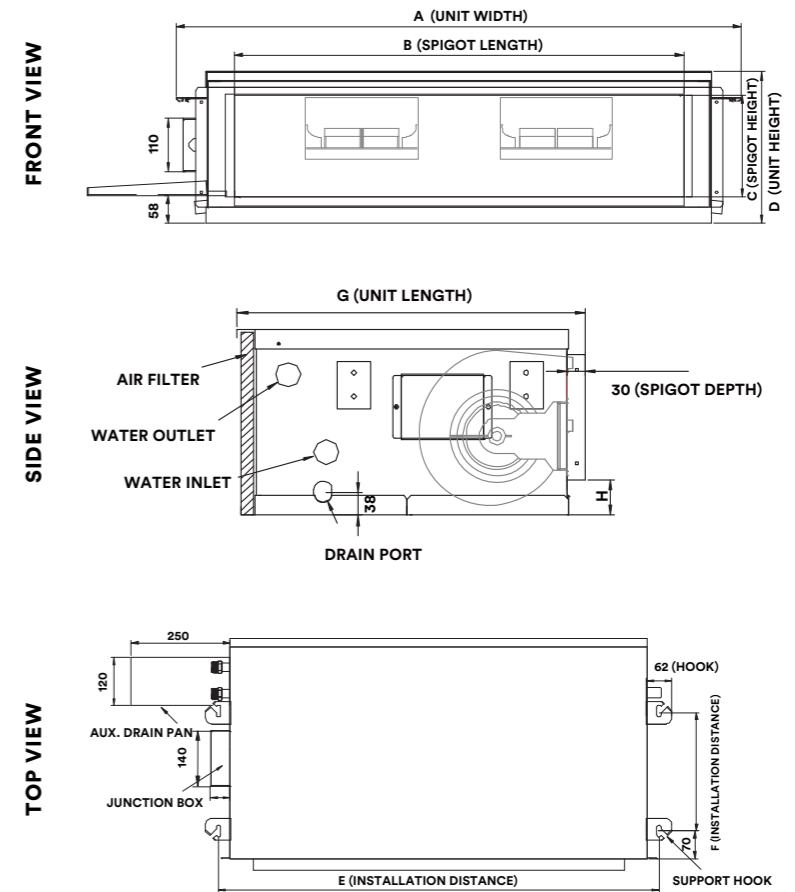
- (1) External Static Pressure are measured based on Medium dirty polyester air filter.
- (2) Unit noise level and fan motor output are stated based on 4-row cooling coil, and can be different for units with other size cooling coils.
- (3) 1/2" OD copper tube cooling coils are available with all models.
- (4) Standard dimension and packing dimension for single skin unit based on 15mm thick closed cell foam insulation.
- (5) Standard dimension and packing dimension for double skin units based on 15mm thick closed cell foam insulation.
- (6) Please add 3kg onto net weights in calculating the shipping data.

Unit Model		HCFC-24M1	HCFC-30M1	HCFC-36M1	HCFC-42M1	HCFC-48M1	HCFC-54M1	
<b>Unit Performance</b>								
Nom. Airflow Rate	High	(L/S)	1130	1415	1700	1967	2100	2360
	Medium		1020	1280	1530	1720	1930	2170
	Low		920	1145	1375	1580	1700	1950
External Static Pressure <sup>1</sup>		(Pa)	Nominal 50 Pa (50 ~ 75 Pa)					
Noise Level <sup>2</sup>	High		<71	<74	<75	<78	<79	<81
	Medium	dB(A)	<68	<71	<72	<75	<75	<77
	Low		<65	<69	<69	<71	<72	<75
<b>Physical Data</b>								
Cooling Coil Size <sup>3</sup>	Fin Height	(mm)	445	445	445	508	508	508
	Fin Length	(mm)	1219	1372	1524	1524	1652	1830
	Coil Style		1/2" OD Copper Tube + Hydrophilic Aluminum Fins 12 FPI					
	Max. Working Pre		20.0 Bar					
Power Supply			220-240V/1PH/50HZ					
Fan Motor	Motor Type		3-Speed Fan Motor					
	Output <sup>2</sup>	(w)	275	320	550	550	750	750
	Qty		2	2	2	2	2	2
Fan Blower	Qty		2	2	2	2	2	2
	Size (Dia x L)	(mm)	225 x 300	250 x 340	250 x 340	315 x 325	315 x 325	315 x 406
	Fan Blower Type		Double Inlet Forward Curved Centrifugal Fan Blower					
Chilled Water Connection	(inch)	3/4" FPT - 1" MPT	1-1/4" MPT					
Drainage Connection	(inch)	3/4" MPT						
Standard Dimension - Single Skin Unit <sup>4</sup>			825 x 1523	825 x 1695	895 x 1845	995 x 1845	995 x 1970	995 x 2150
Standard Dimension - Double Skin Unit <sup>5</sup>		(mm)	x 540	x 540	x 540	x 615	x 615	x 615
Packing Dimension - Single Skin Unit <sup>4</sup>			840 x 1570	840 x 1745	910 x 1895	1010 x 1895	1040 x 2020	1040 x 2260
Packing Dimension - Double Skin Unit <sup>5</sup>		(mm)	x 570	x 570	x 570	x 645	x 645	x 645
Net Weight <sup>6</sup>	4 Row Coil	(kg)	118.0	145.0	165.0	168.0	184.0	199.0
	5 Row Coil	(kg)	126.0	156.0	177.0	181.0	197.0	213.0
	6 Row Coil	(kg)	145.0	166.0	189.0	194.0	210.0	228.0

**NOTES**

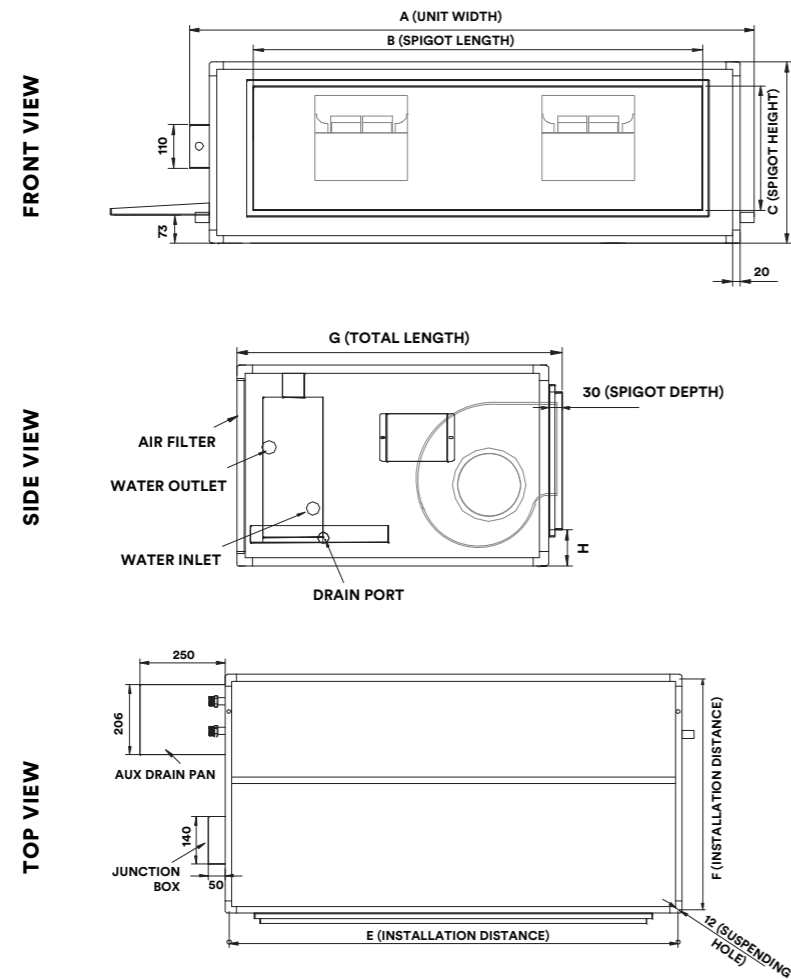
- (1) External Static Pressure are measured based on Medium dirty polyester air filter.
- (2) Unit noise level and fan motor output are stated based on 4-row cooling coil, and can be different for units with other size cooling coils.
- (3) 1/2" OD copper tube cooling coils are available with all models.
- (4) Standard dimension and packing dimension for single skin unit based on 15mm thick closed cell foam insulation.
- (5) Standard dimension and packing dimension for double skin units based on 15mm thick closed cell foam insulation.
- (6) Please add 3kg onto net weights in calculating the shipping data.

**Single Skin Unit**

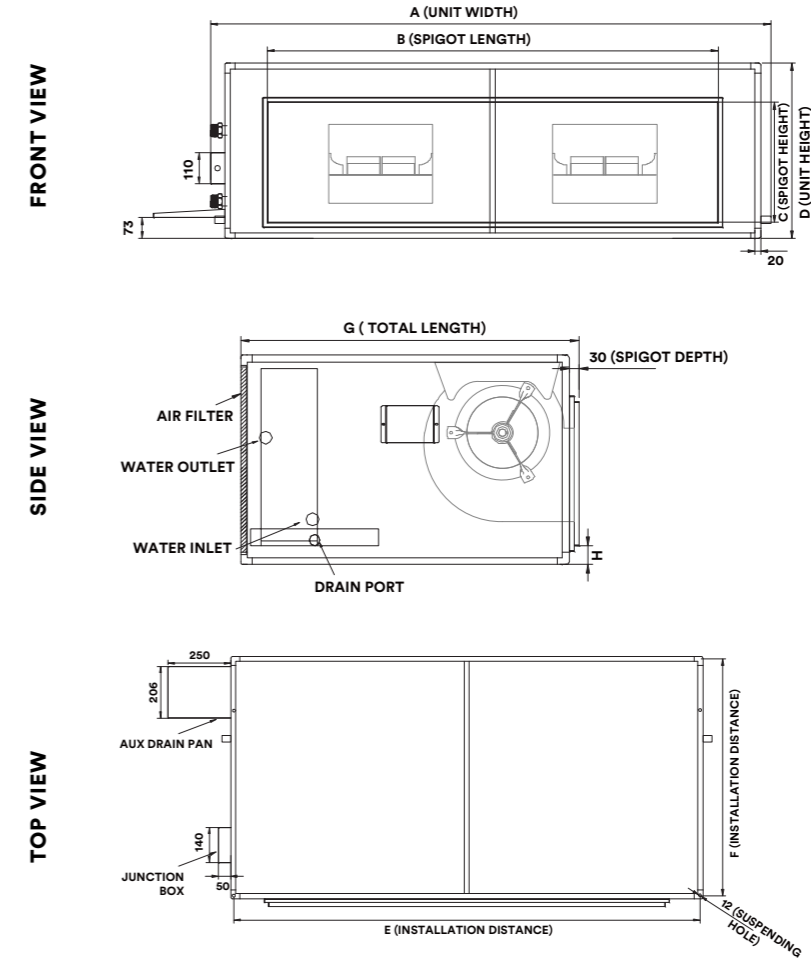


UNIT MODEL	A (mm)	B (mm)	C (mm)	D (mm)	E (mm)	F (mm)	G (mm)	H (mm)
HCFC-02M1S	820	581	212	315	757	300	590	52
HCFC-03M1S	820	581	212	315	757	300	590	52
HCFC-04M1S	820	681	212	315	857	300	590	41
HCFC-05M1S	820	681	212	315	857	300	590	41
HCFC-06M1S	1170	931	211	315	1107	300	590	41
HCFC-08M1S	1170	931	211	315	1107	300	590	41
HCFC-10M1S	1220	653	291	410	1154	474	742	72
HCFC-12M1S	1370	1007	291	410	1334	474	742	52
HCFC-14M1S	1370	1007	291	410	1334	474	742	52
HCFC-18M1S	1523	1207	291	475	1459	474	742	128
HCFC-20M1S	1523	1207	291	475	1459	474	742	128

Double Skin Unit



Single and Double Skin Unit



CONCEALED DUCTED FAN COIL UNIT (MEDIUM ESP)

UNIT MODEL	A (mm)	B (mm)	C (mm)	D (mm)	E (mm)	F (mm)	G (mm)	H (mm)
HCFC-02M1DA	880	569	212	365	774	550	600	89
HCFC-03M1DA	880	569	212	365	774	550	600	89
HCFC-04M1DA	980	569	212	365	874	550	600	89
HCFC-05M1DA	980	569	212	365	874	550	600	89
HCFC-06M1DA	1230	935	212	365	1124	550	600	94
HCFC-08M1DA	1230	935	212	365	1124	550	600	94
HCFC-10M1DA	1280	736	311	460	1174	692	742	85
HCFC-12M1DA	1430	1135	311	460	1324	692	742	85
HCFC-14M1DA	1430	1135	311	460	1324	692	742	85
HCFC-18M1DA	1523	1135	311	475	1417	692	742	100
HCFC-20M1DA	1523	1135	311	475	1417	692	742	100

CONCEALED DUCTED FAN COIL UNIT (MEDIUM ESP)

UNIT MODEL	A (mm)	B (mm)	C (mm)	D (mm)	E (mm)	F (mm)	G (mm)	H (mm)
HCFC-24M1DA	1523	1135	311	540	1417	775	825	67
HCFC-30M1DA	1695	1301	367	540	1583	775	825	57
HCFC-36M1DA	1845	1301	367	540	1733	845	895	57
HCFC-42M1DA	1845	1301	367	615	1733	945	995	19
HCFC-48M1DA	1970	1578	421	615	1860	945	995	56
HCFC-054M1DA	2150	1578	421	615	2038	945	995	65

CONCEALED DUCTED FAN COIL UNIT (MEDIUM ESP)

Unit Model	Rows of Coil	Fan Speed	Air on DBT/WBT 23°C/16°C				Air on DBT/WBT 24°C/18°C			
			Standard Appli- cation EWT/LWT 5.5°C/11.5°C		High Delta T Appli- cation EWT/LWT 5.5°C/14.5°C		Standard Appli- cation EWT/LWT 5.5°C/11.5°C		High Delta T Appli- cation EWT/LWT 5.5°C/14.5°C	
			T.C.	S.C.	T.C.	S.C.	T.C.	S.C.	T.C.	S.C.
			(kw)	(kw)	(kw)	(kw)	(kw)	(kw)	(kw)	(kw)
HCFC-02M1	4	High	1.5	1.3	1.4	1.2	2.0	1.3	1.5	1.1
		Medium	1.4	1.2	1.3	1.1	1.9	1.2	1.4	1.0
		Low	1.3	1.1	1.2	1.0	1.7	1.1	1.3	1.0
	5	High	1.7	1.4	1.6	1.3	2.2	1.4	1.6	1.2
		Medium	1.5	1.3	1.5	1.2	2.0	1.3	1.5	1.1
		Low	1.4	1.2	1.4	1.2	1.9	1.2	1.4	1.0
	6	High	2.0	1.5	1.6	1.4	2.6	1.6	2.1	1.4
		Medium	1.8	1.4	1.5	1.3	2.4	1.5	1.9	1.3
		Low	1.7	1.3	1.4	1.2	2.2	1.4	1.8	1.2
HCFC-03M1	4	High	2.4	2.0	1.9	1.8	3.1	2.0	2.4	1.8
		Medium	2.2	1.8	1.8	1.6	2.9	1.9	2.3	1.6
		Low	2.0	1.7	1.6	1.5	2.7	1.7	2.1	1.5
	5	High	2.8	2.2	2.2	2.0	3.2	2.1	2.9	2.0
		Medium	2.6	2.0	2.1	1.8	3.0	2.0	2.7	1.8
		Low	2.3	1.8	1.9	1.7	2.7	1.8	2.5	1.7
	6	High	2.9	2.3	2.5	2.1	3.8	2.4	3.2	2.2
		Medium	2.7	2.1	2.4	2.0	3.5	2.2	3.0	2.0
		Low	2.5	1.9	2.1	1.8	3.2	2.0	2.8	1.8
HCFC-04M1	4	High	2.7	2.4	2.5	2.3	3.6	2.5	3.2	2.3
		Medium	2.6	2.3	2.4	2.2	3.4	2.3	3.0	2.2
		Low	2.4	2.1	2.2	2.0	3.2	2.2	2.8	2.0
	5	High	3.3	2.7	3.0	2.6	4.2	2.8	3.8	2.6
		Medium	3.0	2.5	2.8	2.4	4.0	2.6	3.5	2.4
		Low	2.9	2.4	2.6	2.2	3.7	2.5	3.3	2.2
	6	High	3.8	3.0	3.3	2.8	4.8	3.1	4.0	2.8
		Medium	3.6	2.8	3.1	2.6	4.5	2.9	3.7	2.6
		Low	3.3	2.6	2.9	2.4	4.2	2.7	3.5	2.4
HCFC-05M1	4	High	3.6	3.1	2.8	2.8	4.7	3.2	3.5	2.7
		Medium	3.3	2.8	2.6	2.5	4.3	2.9	3.3	2.5
		Low	3.0	2.6	2.4	2.3	4.0	2.6	3.0	2.3
	5	High	4.0	3.4	3.2	3.0	5.2	3.5	4.0	3.0
		Medium	3.8	3.1	3.0	2.8	4.9	3.2	3.7	2.8
		Low	3.4	2.8	2.7	2.5	4.5	2.9	3.4	2.5
	6	High	4.6	3.7	4.0	3.4	5.9	3.8	5.2	3.5
		Medium	4.2	3.4	3.7	3.2	5.5	3.5	4.8	3.2
		Low	3.8	3.0	3.4	2.8	5.0	3.2	4.4	2.9

CONCEALED DUCTED FAN COIL UNIT (MEDIUM ESP)

Unit Model	Rows of Coil	Fan Speed	Air on DBT/WBT 23°C/16°C				Air on DBT/WBT 24°C/18°C			
			Standard Appli- cation EWT/LWT 5.5°C/11.5°C		High Delta T Appli- cation EWT/LWT 5.5°C/14.5°C		Standard Appli- cation EWT/LWT 5.5°C/11.5°C		High Delta T Appli- cation EWT/LWT 5.5°C/14.5°C	
			T.C.	S.C.	T.C.	S.C.	T.C.	S.C.	T.C.	S.C.
			(kw)	(kw)	(kw)	(kw)	(kw)	(kw)	(kw)	(kw)
HCFC-06M1	4	High	4.6	3.9	3.6	3.5	5.9	4.0	4.5	3.4
		Medium	4.1	3.5	3.3	3.2	5.4	3.6	4.1	3.1
		Low	3.8	3.2	3.0	2.8	4.9	3.3	3.8	2.8
	5	High	5.4	4.4	4.3	4.0	6.7	4.5	5.5	4.0
		Medium	4.9	4.0	3.9	3.6	6.1	4.0	5.0	3.6
		Low	4.4	3.5	3.5	3.2	5.5	3.6	4.5	3.2
	6	High	5.7	4.7	4.9	4.3	7.4	4.8	6.3	4.4
		Medium	5.1	4.1	4.5	3.9	6.7	4.3	5.7	3.9
		Low	4.6	3.7	4.0	3.4	6.0	3.9	5.2	3.5
HCFC-08M1	4	High	5.5	4.7	4.6	4.3	7.1	4.8	5.7	4.3
		Medium	5.0	4.2	4.2	3.9	6.5	4.4	5.3	3.8
		Low	4.5	3.8	3.8	3.5	5.9	3.9	4.8	3.5
	5	High	6.4	5.3	5.2	4.8	8.4	5.5	6.6	4.7
		Medium	5.8	4.7	4.7	4.2	7.6	4.9	6.0	4.3
		Low	5.3	4.2	4.3	3.8	6.8	4.4	5.4	3.8
	6	High	7.2	5.7	5.9	5.2	9.1	5.9	7.5	5.2
		Medium	6.5	5.1	5.3	4.6	8.3	5.3	6.9	4.7
		Low	5.8	4.5	4.8	4.1	7.4	4.7	6.2	4.2
HCFC-10M1	4	High	7.3	6.3	5.8	5.7	9.5	6.4	7.3	5.5
		Medium	6.7	5.7	5.3	5.1	8.7	5.9	6.7	5.1
		Low	6.1	5.1	4.9	4.6	8.0	5.3	6.1	4.5
	5	High	8.6	7.1	7.0	6.4	10.9	7.2	8.8	6.4
		Medium	7.9	6.4	6.4	5.8	10.0	6.5	8.1	5.8
		Low	7.1	5.7	5.8	5.1	9.1	5.9	7.4	5.2
	6	High	9.2	7.5	7.9	7.0	11.8	7.7	10.1	7.0
		Medium	8.3	6.7	7.2	6.2	10.8	7.0	9.3	6.3
		Low	7.5	6.0	6.5	5.5	10.6	10.3	8.4	5.7
HCFC-12M1	4	High	8.9	7.5	7.1	6.8	10.9	7.5	8.9	6.7
		Medium	8.3	7.0	6.7	6.3	10.3	7.0	8.4	6.3
		Low	7.7	6.4	6.2	5.8	9.5	6.4	7.8	5.7
	5	High	10.2	8.4	8.5	7.6	12.7	8.4	10.7	7.6
		Medium	9.6	7.8	7.9	7.1	11.9	7.9	10.1	7.1
		Low	8.8	7.1	7.3	6.4	10.9	7.2	9.3	6.5
	6	High	11.1	9.0	9.6	8.3	14.3	9.3	12.2	8.4
		Medium	10.3	8.1	9.0	7.7	13.4	8.6	11.5	7.8
		Low	9.5	7.5	8.2	7.0	12.3	7.8	10.6	7.1

CONCEALED DUCTED FAN COIL UNIT (MEDIUM ESP)

Unit Model	Rows of Coil	Fan Speed	Air on DBT/WBT 23°C/16°C				Air on DBT/WBT 24°C/18°C			
			Standard Appli- cation EWT/LWT 5.5°C/11.5°C		High Delta T Appli- cation EWT/LWT 5.5°C/14.5°C		Standard Appli- cation EWT/LWT 5.5°C/11.5°C		High Delta T Appli- cation EWT/LWT 5.5°C/14.5°C	
			T.C.	S.C.	T.C.	S.C.	T.C.	S.C.	T.C.	S.C.
			(kw)	(kw)	(kw)	(kw)	(kw)	(kw)	(kw)	(kw)
HCFC-14M1	4	High	10.6	9.0	8.5	8.1	13.1	9.0	10.6	8.0
		Medium	9.8	8.3	7.9	7.5	12.2	8.3	9.9	7.4
		Low	8.8	7.3	7.1	6.6	11.0	7.4	8.9	6.5
	5	High	12.2	10.1	10.1	9.2	15.0	10.1	12.8	9.2
		Medium	11.3	9.2	9.4	8.4	13.9	9.2	11.9	8.4
		Low	10.1	8.1	8.3	7.4	12.4	8.1	10.7	7.4
	6	High	13.3	10.8	11.5	10.0	16.4	10.8	14.6	10.1
		Medium	12.3	9.8	10.6	9.1	15.1	9.9	13.5	9.2
		Low	10.9	8.6	9.4	7.9	13.5	8.7	12.1	8.1
HCFC-18M1	4	High	12.2	10.6	10.2	9.8	15.8	10.8	12.9	9.6
		Medium	11.3	9.7	9.5	8.9	14.7	9.9	11.9	8.8
		Low	10.4	8.8	8.8	8.1	13.6	9.1	11.0	8.0
	5	High	14.0	11.8	12.2	11.0	18.1	12.1	15.4	11.0
		Medium	12.9	10.7	11.2	10.0	16.7	11.0	14.3	10.0
		Low	11.8	9.7	10.3	9.1	15.4	10.1	13.2	9.1
	6	High	15.3	12.6	13.9	12.0	19.8	13.0	16.6	11.7
		Medium	14.0	11.4	12.7	10.9	18.2	11.9	15.3	10.6
		Low	12.8	10.3	11.6	9.8	16.7	10.8	14.1	9.7
HCFC-20M1	4	High	14.6	12.8	11.2	11.0	18.5	12.9	14.3	11.2
		Medium	13.5	11.7	10.9	10.6	17.2	11.8	13.4	10.3
		Low	12.3	10.5	9.9	9.4	15.8	10.7	12.2	9.2
	5	High	17.0	14.2	13.9	12.9	19.7	13.7	17.3	12.7
		Medium	15.8	13.0	12.8	11.7	18.4	12.5	16.0	11.6
		Low	14.2	11.5	11.6	10.4	16.7	11.2	14.6	10.4
	6	High	18.0	14.8	15.8	13.9	23.0	15.2	19.8	13.8
		Medium	16.5	13.5	14.5	12.6	21.2	13.9	18.3	12.7
		Low	14.9	12.0	13.1	11.2	19.1	12.4	16.6	11.3
HCFC-24M1	4	High	16.9	14.8	12.9	12.7	21.4	14.9	16.6	13.0
		Medium	15.8	13.6	12.7	12.3	20.0	13.8	15.6	12.0
		Low	14.7	12.6	11.8	11.4	18.9	12.8	14.6	11.1
	5	High	19.7	16.4	16.1	14.9	24.6	16.5	20.0	14.6
		Medium	18.4	15.1	15.0	13.7	23.0	15.3	18.7	13.5
		Low	17.1	13.9	13.9	12.5	21.5	14.1	17.5	12.5
	6	High	21.6	17.5	18.2	16.0	26.7	17.6	22.9	16.0
		Medium	20.1	16.1	16.9	14.7	24.9	16.3	21.4	14.8
		Low	18.6	14.7	15.7	13.5	23.2	15.0	19.9	13.6

Unit Model	Rows of Coil	Fan Speed	Air on DBT/WBT 23°C/16°C				Air on DBT/WBT 24°C/18°C			
			Standard Appli- cation EWT/LWT 5.5°C/11.5°C		High Delta T Appli- cation EWT/LWT 5.5°C/14.5°C		Standard Appli- cation EWT/LWT 5.5°C/11.5°C		High Delta T Appli- cation EWT/LWT 5.5°C/14.5°C	
			T.C.	S.C.	T.C.	S.C.	T.C.	S.C.	T.C.	S.C.
			(kw)	(kw)	(kw)	(kw)	(kw)	(kw)	(kw)	(kw)
HCFC-30M1	4	High	20.7	18.2	16.7	16.5	25.0	17.8	20.4	16.0
		Medium	19.4	16.8	15.7	15.3	23.5	16.5	19.4	14.9
		Low	18.1	15.5	14.6	14.0	22.0	15.3	18.0	13.7
	5	High	22.5	19.5	19.9	18.4	28.5	19.6	24.6	18.1
		Medium	21.0	18.0	18.6	17.0	26.8	18.3	23.1	16.8
		Low	19.5	16.5	17.2	15.5	25.0	16.8	21.5	15.4
	6	High	25.9	21.3	22.5	19.8	31.0	20.9	26.2	19.0
		Medium	24.0	19.6	21.0	18.3	29.1	19.4	24.6	17.6
		Low	22.2	17.9	19.4	16.6	26.9	17.8	22.9	16.1
HCFC-36M1	4	High	23.5	21.2	19.9	19.7	29.6	21.1	24.4	19.0
		Medium	22.1	19.6	18.7	18.2	27.9	19.6	22.9	17.6
		Low	20.5	18.0	17.4	16.7	26.2	18.2	21.5	16.3
	5	High	26.9	23.3	23.7	22.0	33.9	23.4	28.5	21.2
		Medium	25.0	21.4	22.1	20.2	31.8	21.7	26.7	19.6
		Low	23.3	19.7	20.5	18.5	29.7	20.0	25.0	18.1
	6	High	29.2	24.7	25.2	23.0	37.0	25.0	31.4	22.7
		Medium	27.2	22.7	23.5	21.0	34.5	23.1	29.3	20.9
		Low	25.2	20.8	21.8	19.3	32.2	21.3	27.4	19.3
HCFC-42M1	4	High	27.3	24.5	23.0	22.7	30.7	23.0	28.1	21.9
		Medium	25.1	22.1	21.1	20.5	28.4	20.9	26.0	19.9
		Low	23.7	20.7	20.0	19.2	27.1	19.6	24.7	18.7
	5	High	30.8	26.8	27.3	25.3	38.8	26.9	32.2	24.2
		Medium	28.1	24.1	25.0	22.8	35.8	24.4	29.7	21.9
		Low	26.6	22.5	23.5	21.2	33.9	22.9	28.1	20.5
	6	High	33.6	28.5	28.8	26.4	42.6	28.9	35.8	26.1
		Medium	30.7	25.6	26.3	23.7	39.0	26.0	32.8	23.5
		Low	28.9	23.8	24.8	22.1	36.9	24.4	31.0	22.0

CONCEALED DUCTED FAN COIL UNIT (MEDIUM ESP)

Unit Model	Rows of Coil	Fan Speed	Air on DBT/WBT 23°C/16°C				Air on DBT/WBT 24°C/18°C			
			Standard Appli- cation EWT/LWT 5.5°C/11.5°C		High Delta T Appli- cation EWT/LWT 5.5°C/14.5°C		Standard Appli- cation EWT/LWT 5.5°C/11.5°C		High Delta T Appli- cation EWT/LWT 5.5°C/14.5°C	
			T.C.	S.C.	T.C.	S.C.	T.C.	S.C.	T.C.	S.C.
			(kw)	(kw)	(kw)	(kw)	(kw)	(kw)	(kw)	(kw)
	4	High	29.7	26.4	25.1	24.5	33.7	24.9	30.7	23.7
		Medium	28.2	24.8	23.8	23.0	32.1	23.5	29.2	22.3
		Low	25.9	22.5	21.9	20.8	29.7	21.4	27.1	20.9
HCFC-48M1	5	High	33.5	28.9	29.7	27.3	42.3	29.1	35.2	26.2
		Medium	31.6	27.0	28.1	25.5	40.2	27.4	33.4	24.6
		Low	29.1	24.4	25.7	23.0	37.1	24.9	30.9	22.4
	6	High	36.6	30.7	31.4	28.5	46.4	31.2	39.1	28.2
		Medium	34.5	28.7	29.7	26.6	43.9	29.2	37.0	26.4
		Low	31.6	25.9	27.2	24.0	40.4	26.6	34.1	23.9
	4	High	30.9	28.6	28.6	27.7	38.7	28.3	33.4	26.2
		Medium	29.3	26.9	27.1	26.0	36.9	26.7	31.7	24.6
		Low	27.4	24.8	25.3	23.9	34.6	24.7	29.8	22.8
HCFC-54M1	5	High	38.1	32.6	32.6	30.3	44.2	31.3	40.1	29.7
		Medium	35.9	30.5	30.8	28.4	41.9	29.4	38.1	27.9
		Low	33.5	28.1	28.6	26.0	39.2	27.1	35.7	25.7
	6	High	41.7	34.7	35.8	32.3	48.8	33.7	44.6	31.9
		Medium	39.3	32.5	33.8	30.1	46.2	31.6	42.2	29.9
		Low	36.4	29.7	31.4	27.6	43.2	29.1	39.4	27.6

**CONCEALED DUCTED FAN COIL UNIT (MEDIUM ESP)**





# CONCEALED DUCTED FN COIL UNIT (HIGH ESP)



## SPECIFICATIONS

### CABINET

Single Skin: Casing made of 1.2mm powder coated galvanized steel sheets, internally insulated with 15mm closed cell foam insulation.

Double Skin: Casing made of 1.0mm outer and 0.6mm inner powder coated galvanized steel sheets, with 15mm thick closed cell foam insulation.

**Option 1: 25mm thick closed cell foam insulation (additional cost).**

**Option 2: For Hygienic unit, inner stainless steel sheet (additional cost).**

**Option 3: Return air spigot with bottom withdrawal air filter (additional cost).**

### FAN SECTION

Fan Motor: 3 speed fan motors with permanent split capacitor, thermal overload protection, and lifetime lubricated ball bearing.

Fan Blower: DIDW forward curved centrifugal fan blower made of galvanized steel directly driven by fan motors.

All fan blowers are statically and dynamically balanced.

### COIL SECTION

Cooling coils made out of 10mm or 12mm OD copper tubes mechanically bonded into aluminum fins, with copper header; fin thickness 0.1mm, with fin spacing 2.0mm (12FPI). Cooling coils are ARI rated.

### DRAIN PAN

Drain pan made of powder coated galvanized steel along with auxiliary drain pan extending under valve package, insulated with closed cell foam.

**Option: Drain pan made of stainless steel (additional cost).**

### FILTER SECTION

12mm thick aluminum return air filter assembled in aluminum frames provided for easy withdrawal and replacement.

### HEATER BATTERY

PTC Electrical Heater Battery is supplied with inbuilt thermal protection for heating application on special requirement (additional cost).

Unit Model		HCFC-03H1	HCFC-04H1	HCFC-05H1	HCFC-06H1	HCFC-08H1	HCFC-10H1	
<b>Unit Performance</b>								
Nom. Airflow Rate	High	(L/S)	146	186	216	261	410	485
	Medium	(L/S)	127	160	190	239	364	428
	Low	(L/S)	111	139	165	205	320	380
External Static Pressure <sup>1</sup>		(Pa)	Nominal 100 Pa (100 ~ 150 Pa)					
Noise Level <sup>2</sup>	High	(dB(A))	<60	<62	<63	<65	<66	<68
	Medium	(dB(A))	<57	<58	<61	<63	<63	<65
	Low	(dB(A))	<55	<55	<57	<60	<61	<61
<b>Physical Data</b>								
Cooling Coil Size <sup>3</sup>	Fin Height	(mm)	203	203	254	254	305	305
	Fin Length	(mm)	510	610	610	864	762	914
	Coil Style		3/8" OD Copper Tube + Hydrophilic Aluminum Fins 12 FPI					
	Max. Working Pre		20.0 Bar					
Power Supply			220-240V/1PH/50HZ					
Fan Motor	Motor Type		3-Speed Fan Motor					
	Output <sup>2</sup>	(w)	80	100	120	150	150	180
	Qty		1	1	1	1	1	1
Fan Blower	Qty		1	1	1	2	1	1
	Size (Dia x L)	(mm)	200 x 190	200 x 190	200 x 190	180 x 200	200 x 190	200 x 190
	Fan Blower Type		Double Inlet Forward Curved Centrifugal Fan Blower					
Chilled Water Connection		(inch)	Inner 1/2" FPT - Outer 3/4" MPT					
Drainage Connection		(inch)	3/4" MPT					
Standard Dimension - Single Skin Unit <sup>4</sup>			590 x 820 x 315	590 x 920 x 315	590 x 1170 x 315	742 x 1220 x 410		
Standard Dimension - Double Skin Unit <sup>5</sup>		(mm)	600 x 880 x 365	600 x 980 x 365	600 x 1230 x 365	742 x 1280 x 460		
Packing Dimension - Single Skin Unit <sup>4</sup>			600 x 850 x 360	600 x 950 x 360	600 x 1200 x 360	755 x 1250 x 420		
Packing Dimension - Double Skin Unit <sup>5</sup>		(mm)	615 x 910 x 410	615 x 1010 x 410	600 x 1260 x 410	755 x 1310 x 505		
Net Weight <sup>6</sup>	4 Row Coil	(kg)	43.0	43.5	50.0	55.0	66.0	75.0
	5 Row Coil	(kg)	45.5	46.5	53.0	59.0	70.0	80.0
	6 Row Coil	(kg)	48.0	49.5	56.0	63.0	74.0	84.5

**NOTES**

- (1) External Static Pressure are measured based on Medium dirty polyester air filter.
- (2) Unit noise level and fan motor output are stated based on 4-row cooling coil, and can be different for units with other size cooling coils.
- (3) 1/2" OD copper tube cooling coils are available with all models.
- (4) Standard dimension and packing dimension for single skin unit based on 15mm thick closed cell foam insulation.
- (5) Standard dimension and packing dimension for double skin units based on 15mm thick closed cell foam insulation.
- (6) Please add 3kg onto net weights in calculating the shipping data.

Unit Model		HCFC-12H1	HCFC-14H1	HCFC-18H1	HCFC-20H1	HCFC-24H1	
<b>Unit Performance</b>							
Nom. Airflow Rate	High	(L/S)	605	775	905	980	1186
	Medium	(L/S)	524	670	810	875	1031
	Low	(L/S)	452	582	695	766	930
External Static Pressure <sup>1</sup>		(Pa)	Nominal 100 Pa (100 ~ 150 Pa)				
Noise Level <sup>2</sup>	High	(dB(A))	<70	<70	<71	<72	<75
	Medium	(dB(A))	<66	<67	<66	<68	<71
	Low	(dB(A))	<63	<65	<63	<65	<69
<b>Physical Data</b>							
Cooling Coil Size <sup>3</sup>	Fin Height	(mm)	305	356	356	381	445
	Fin Length	(mm)	1067	1067	1219	1219	1219
	Coil Style		3/8" OD Copper Tube + Hydrophilic Aluminum Fins 12 FPI			1/2" OD Copper Tube + Hydrophilic Aluminum Fins 12 FPI	
	Max. Working Pre		20.0 Bar				
Power Supply			220-240V/1PH/50HZ				
Fan Motor	Motor Type		3-Speed Fan Motor				
	Output <sup>2</sup>	(w)	200	300	450	500	320
	Qty		1	1	1	1	2
Fan Blower	Qty		2	2	2	2	2
	Size (Dia x L)	(mm)	200 x 190	200 x 190	200 x 190	200 x 190	225 x 300
	Fan Blower Type		Double Inlet Forward Curved Centrifugal Fan Blower				
Chilled Water Connection		(inch)	3/4" FPT - 1" MPT				
Drainage Connection		(inch)	3/4" MPT				
Standard Dimension - Single Skin Unit <sup>4</sup>			742 x 1370 x 410	742 x 1523 x 475		825 x 1523 x 540	
Standard Dimension - Double Skin Unit <sup>5</sup>		(mm)	742 x 1430 x 460	742 x 1523 x 475		825 x 1523 x 540	
Packing Dimension - Single Skin Unit <sup>4</sup>			755 x 1400 x 440	755 x 1570 x 505		840 x 1570 x 560	
Packing Dimension - Double Skin Unit <sup>5</sup>		(mm)	755 x 1460 x 505	755 x 1550 x 520		840 x 1570 x 560	
Net Weight <sup>6</sup>	4 Row Coil	(kg)	79.5	85.0	92.0	99.0	118.0
	5 Row Coil	(kg)	85.0	92.0	99.0	108.0	126.0
	6 Row Coil	(kg)	84.5	99.0	106.0	116.0	135.0

**NOTES**

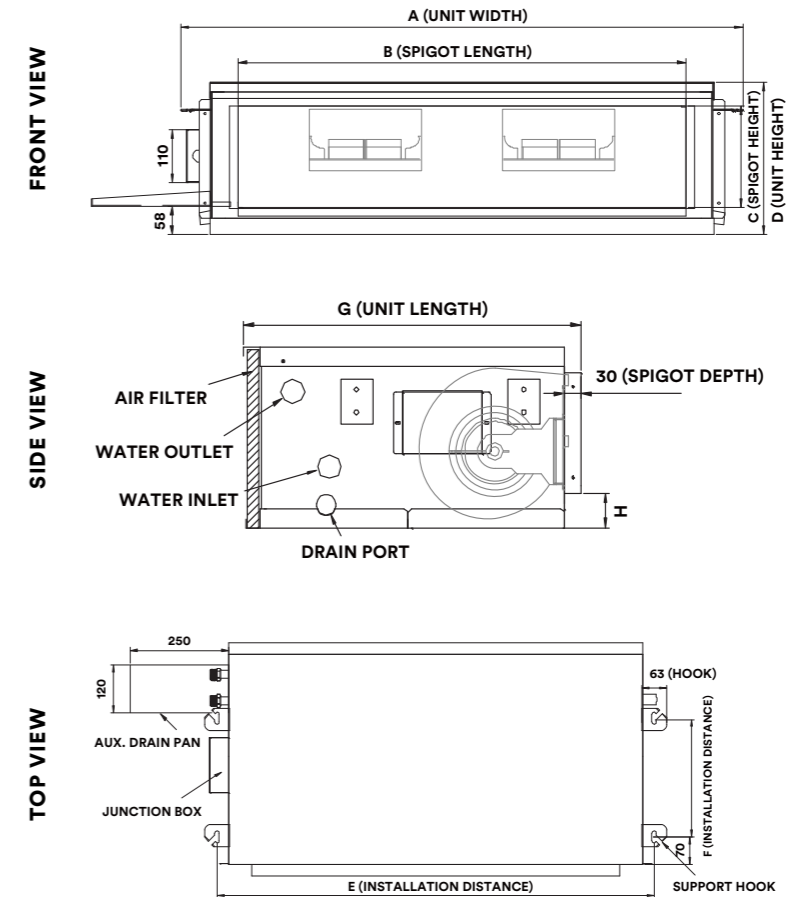
- (1) External Static Pressure are measured based on Medium dirty polyester air filter.
- (2) Unit noise level and fan motor output are stated based on 4-row cooling coil, and can be different for units with other size cooling coils.
- (3) 1/2" OD copper tube cooling coils are available with all models.
- (4) Standard dimension and packing dimension for single skin unit based on 15mm thick closed cell foam insulation.
- (5) Standard dimension and packing dimension for double skin units based on 15mm thick closed cell foam insulation.
- (6) Please add 3kg onto net weights in calculating the shipping data.

Unit Model		HCFC-30H1	HCFC-36H1	HCFC-42H1	HCFC-48H1	HCFC-54H1	
<b>Unit Performance</b>							
Nom. Airflow Rate	High	(L/S)	1460	1745	1925	2150	2360
	Medium		1315	1530	1720	1930	2170
	Low		1178	1348	1560	1690	1935
External Static Pressure <sup>1</sup>		(Pa)	Nominal 100 Pa (100 ~ 150 Pa)				
Noise Level <sup>2</sup>	High	dB(A)	<77	<78	<80	<82	<84
	Medium		<74	<75	<76	<79	<79
	Low		<72	<72	<72	<75	<76
<b>Physical Data</b>							
Cooling Coil Size <sup>3</sup>	Fin Height	(mm)	445	445	508	508	508
	Fin Length	(mm)	1372	1524	1524	1652	1830
	Coil Style		1/2" OD Copper Tube + Hydrophilic Aluminum Fins 12 FPI				
	Max. Working Pre		20.0 Bar				
Power Supply			220-240V/1PH/50HZ				
Fan Motor	Motor Type		3-Speed Fan Motor				
	Output <sup>2</sup>	(w)	450	450	550	750	1000
	Qty		2	2	2	2	2
Fan Blower	Qty		2	2	2	2	2
	Size (Dia x L)	(mm)	250 x 340	280 x 360	280 x 360	280 x 360	280 x 360
	Fan Blower Type		Double Inlet Forward Curved Centrifugal Fan Blower				
Chilled Water Connection		(inch)	1-1/4" MPT				
Drainage Connection		(inch)	3/4" MPT				
Standard Dimension - Single Skin Unit <sup>4</sup>			825 x 1695	895 x 1845	995 x 1845	995 x 1970	995 x 2150
Standard Dimension - Double Skin Unit <sup>5</sup>			(mm) x 540	x 540	x 615	x 615	x 615
Packing Dimension - Single Skin Unit <sup>4</sup>			840 x 1745	910 x 1895	1010 x 1895	1040 x 2020	1040 x 2260
Packing Dimension - Double Skin Unit <sup>5</sup>			(mm) x 560	x 560	x 635	x 635	x 635
Net Weight <sup>6</sup>	4 Row Coil	(kg)	145.0	165.0	168.0	184.0	199.0
	5 Row Coil	(kg)	156.0	177.0	181.0	197.0	213.0
	6 Row Coil	(kg)	166.0	189.0	194.0	210.0	228.0

**NOTES**

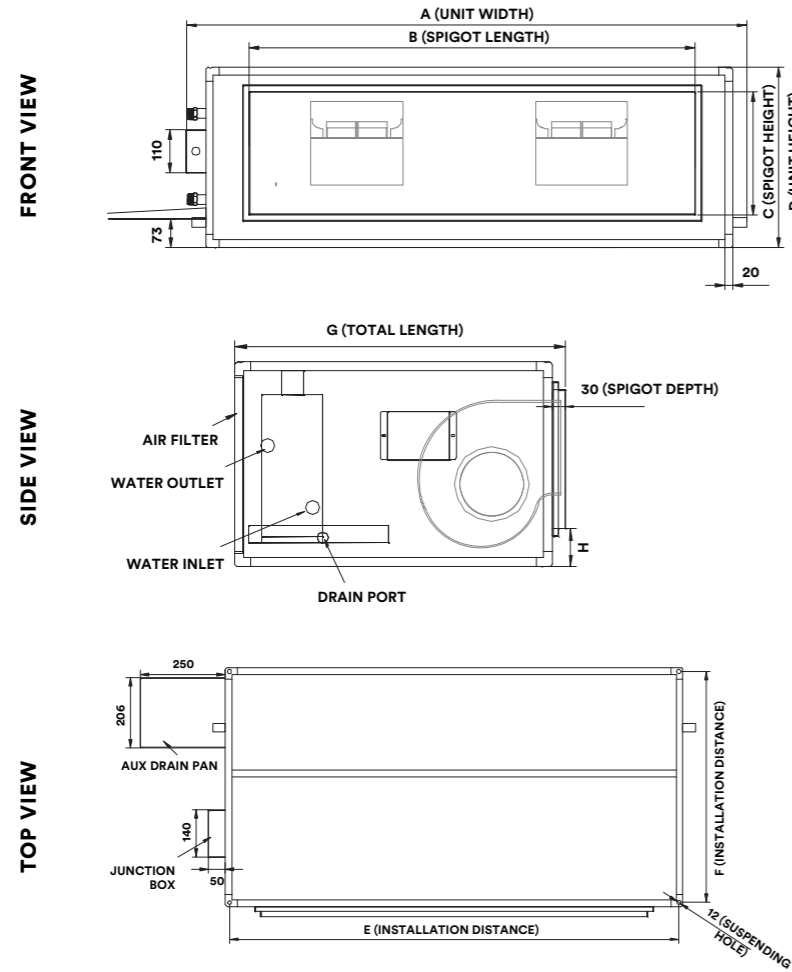
- (1) External Static Pressure are measured based on Medium dirty polyester air filter.
- (2) Unit noise level and fan motor output are stated based on 4-row cooling coil, and can be different for units with other size cooling coils.
- (3) 1/2" OD copper tube cooling coils are available with all models.
- (4) Standard dimension and packing dimension for single skin unit based on 15mm thick closed cell foam insulation.
- (5) Standard dimension and packing dimension for double skin units based on 15mm thick closed cell foam insulation.
- (6) Please add 3kg onto net weights in calculating the shipping data.

**Single Skin Unit**



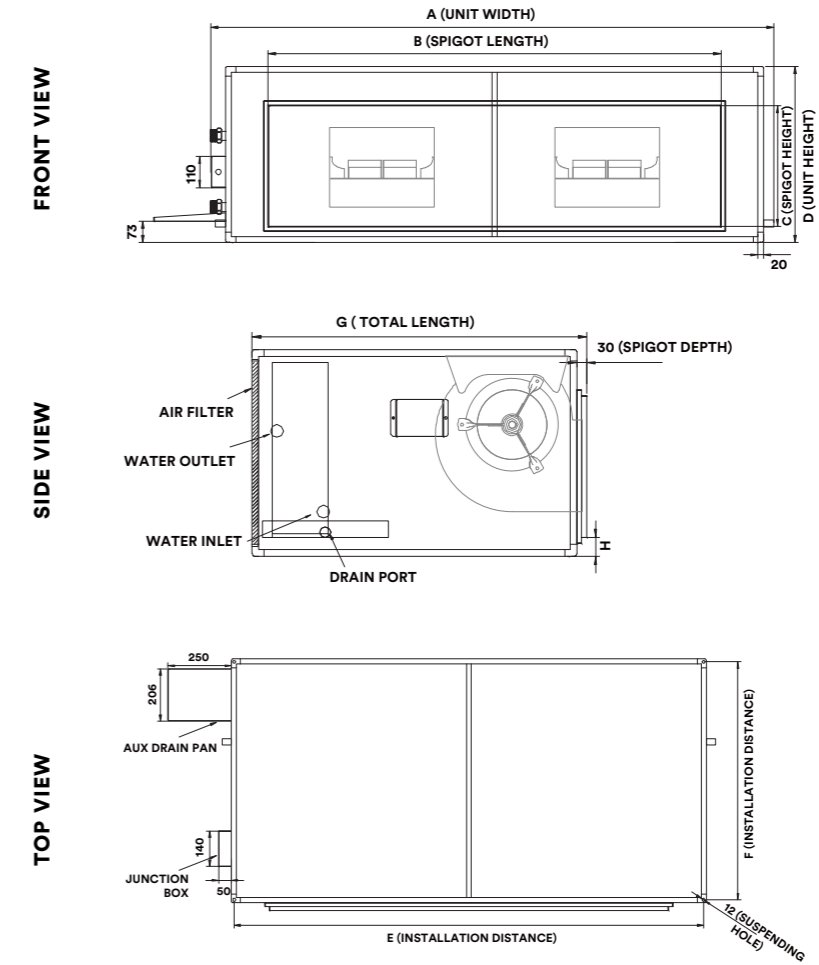
UNIT MODEL	A (mm)	B (mm)	C (mm)	D (mm)	E (mm)	F (mm)	G (mm)	H (mm)
HCFC-03H1S	820	581	212	315	757	300	590	52
HCFC-04H1S	920	681	212	315	857	300	590	41
HCFC-05H1S	920	681	212	315	857	300	590	41
HCFC-06H1S	1170	931	211	315	1107	300	590	41
HCFC-08H1S	1220	653	291	410	1154	474	742	72
HCFC-10H1S	1220	653	291	410	1154	474	742	72
HCFC-12H1S	1370	1007	291	410	1334	474	742	52
HCFC-14H1S	1370	1007	291	410	1334	474	742	52
HCFC-18H1S	1523	1207	291	469	1459	474	742	128
HCFC-20H1S	1523	1207	291	469	1459	474	742	128

Double Skin Unit



UNIT MODEL	A (mm)	B (mm)	C (mm)	D (mm)	E (mm)	F (mm)	G (mm)	H (mm)
HCFC-03H1DA	880	569	212	365	774	550	600	89
HCFC-04H1DA	980	569	212	365	874	550	600	89
HCFC-05H1DA	980	569	212	365	874	550	600	89
HCFC-06H1DA	1230	935	212	365	1124	550	600	94
HCFC-08H1DA	1100	736	311	460	994	692	742	85
HCFC-10H1DA	1280	736	311	460	1174	692	742	85
HCFC-12H1DA	1430	1135	311	460	1324	692	742	85
HCFC-14H1DA	1430	1135	311	460	1324	692	742	85
HCFC-18H1DA	1523	1135	311	475	1417	692	742	100
HCFC-20H1DA	1523	1135	311	475	1417	692	742	100

Single and Double Skin Unit



UNIT MODEL	A (mm)	B (mm)	C (mm)	D (mm)	E (mm)	F (mm)	G (mm)	H (mm)
HCFC-24H1DA	1523	1136	311	540	1417	775	825	67
HCFC-30H1DA	1695	1301	367	540	1583	775	825	57
HCFC-36H1DA	1845	1301	367	540	1733	845	895	57
HCFC-42H1DA	1845	1301	367	615	1733	945	995	69
HCFC-48H1DA	1970	1578	421	615	1860	945	995	56
HCFC-54H1DA	2150	1578	421	615	2038	945	995	65

CONCEALED DUCTED FAN COIL UNIT (HIGH ESP)

Unit Model	Rows of Coil	Fan Speed	Air on DBT/WBT 23°C/16°C				Air on DBT/WBT 24°C/18°C			
			Standard Appli- cation EWT/LWT 5.5°C/11.5°C		High Delta T Appli- cation EWT/LWT 5.5°C/14.5°C		Standard Appli- cation EWT/LWT 5.5°C/11.5°C		High Delta T Appli- cation EWT/LWT 5.5°C/14.5°C	
			T.C.	S.C.	T.C.	S.C.	T.C.	S.C.	T.C.	S.C.
			(kw)	(kw)	(kw)	(kw)	(kw)	(kw)	(kw)	(kw)
HCFC-03H1	4	High	2.4	2.0	1.9	1.8	2.6	1.8	2.4	1.7
		Medium	2.1	1.8	1.7	1.6	2.4	1.7	2.2	1.6
		Low	2.0	1.6	1.6	1.4	2.2	1.5	2.0	1.4
	5	High	2.7	2.2	2.2	2.0	3.2	2.1	2.8	2.0
		Medium	2.5	1.9	2.0	1.8	2.9	1.9	2.6	1.8
		Low	2.2	1.7	1.8	1.6	2.6	1.7	2.4	1.6
	6	High	2.9	2.3	2.5	2.1	3.7	2.4	3.2	2.2
		Medium	2.6	2.0	2.3	1.9	3.4	2.1	2.9	1.9
		Low	2.3	1.8	2.0	1.7	3.0	1.9	2.6	1.7
HCFC-04H1	4	High	3.0	2.5	2.4	2.2	3.4	2.4	3.1	2.2
		Medium	2.7	2.2	2.2	2.0	3.1	2.1	2.8	2.0
		Low	2.5	2.0	2.0	1.8	2.9	1.9	2.6	1.8
	5	High	3.1	2.6	2.9	2.5	4.1	2.7	3.6	2.5
		Medium	2.8	2.3	2.6	2.2	3.7	2.4	3.3	2.2
		Low	2.6	2.1	2.3	2.0	3.3	2.2	3.0	2.0
	6	High	3.7	2.9	3.2	2.7	4.6	3.0	3.9	2.7
		Medium	3.3	2.6	2.9	2.4	4.1	2.6	3.5	2.4
		Low	3.0	2.3	2.6	2.1	3.7	2.3	3.2	2.1
HCFC-05H1	4	High	3.3	2.8	2.6	2.5	4.3	2.9	3.3	2.5
		Medium	3.0	2.6	2.4	2.3	4.0	2.6	3.0	2.3
		Low	2.8	2.3	2.2	2.0	3.6	2.4	2.8	2.0
	5	High	3.7	3.1	3.0	2.8	4.9	3.2	3.7	2.7
		Medium	3.4	2.8	2.7	2.5	4.5	2.9	3.4	2.5
		Low	3.1	2.5	2.5	2.2	4.0	2.6	3.1	2.2
	6	High	4.2	3.3	3.7	3.1	5.4	3.5	4.3	3.0
		Medium	3.8	3.0	3.4	2.8	5.0	3.2	3.9	2.7
		Low	3.4	2.7	3.0	2.5	4.5	2.8	3.6	2.4
HCFC-06H1	4	High	4.0	3.4	3.6	3.2	5.2	3.5	4.0	3.0
		Medium	3.8	3.2	3.4	3.0	4.9	3.3	3.8	2.8
		Low	3.4	2.8	3.1	2.7	4.5	2.9	3.4	2.5
	5	High	4.7	3.8	3.8	3.4	5.9	3.8	4.8	3.4
		Medium	4.4	3.5	3.6	3.2	5.5	3.6	4.5	3.2
		Low	4.0	3.1	3.2	2.8	5.0	3.2	4.1	2.8
	6	High	4.9	4.0	4.5	3.8	6.4	4.1	5.5	3.8
		Medium	4.6	3.7	4.2	3.5	6.0	3.9	5.2	3.5
		Low	4.1	3.3	3.8	3.1	5.4	3.4	4.6	3.1

CONCEALED DUCTED FAN COIL UNIT (HIGH ESP)

Unit Model	Rows of Coil	Fan Speed	10.Air on DBT/WBT 23°C/16°C				11.3Air on DBT/WBT 24°C/18°C			
			Standard Appli- cation EWT/LWT 5.5°C/11.5°C		High Delta T Appli- cation EWT/LWT 5.5°C/14.5°C		Standard Appli- cation EWT/LWT 5.5°C/11.5°C		High Delta T Appli- cation EWT/LWT 5.5°C/14.5°C	
			T.C.	S.C.	T.C.	S.C.	T.C.	S.C.	T.C.	S.C.
			(kw)	(kw)	(kw)	(kw)	(kw)	(kw)	(kw)	(kw)
HCFC-08H1	4	High	5.8	5.0	5.0	4.7	7.5	5.1	6.3	4.6
		Medium	5.3	4.6	4.6	4.3	7.0	4.7	5.8	4.3
		Low	4.9	4.2	4.2	3.9	6.4	4.3	5.4	3.9
	5	High	6.8	5.7	5.7	5.2	8.8	5.8	7.2	5.2
		Medium	6.3	5.2	5.2	4.7	8.2	5.4	6.7	4.7
		Low	5.8	4.7	4.8	4.3	7.5	4.9	6.1	4.3
	6	High	7.7	6.2	6.3	5.5	9.3	6.1	7.9	5.6
		Medium	7.1	5.6	5.8	5.0	8.6	5.6	7.3	5.1
		Low	6.4	5.1	5.3	4.5	7.9	5.1	6.7	4.6
HCFC-10H1	4	High	7.1	6.1	6.1	5.7	9.2	6.2	7.1	5.4
		Medium	6.6	5.5	5.7	5.2	8.5	5.7	6.6	4.9
		Low	6.1	5.1	5.2	4.7	7.9	5.2	6.1	4.5
	5	High	8.3	6.8	7.0	6.2	10.5	7.0	8.9	6.3
		Medium	7.7	6.2	6.4	5.7	9.7	6.4	8.2	5.7
		Low	7.1	5.7	5.9	5.2	9.0	5.8	7.6	5.2
	6	High	8.8	7.2	7.7	6.7	11.5	7.5	9.8	6.8
		Medium	8.1	6.5	7.0	6.0	10.5	6.8	9.0	6.1
		Low	7.4	5.9	6.5	5.5	9.6	6.2	8.3	5.6
HCFC-12H1	4	High	8.9	7.5	7.1	6.8	10.9	7.5	8.9	6.7
		Medium	8.1	6.8	6.5	6.1	10.0	6.8	8.2	6.0
		Low	7.4	6.1	5.9	5.5	9.1	6.1	7.5	5.4
	5	High	10.2	8.4	8.5	7.7	12.4	8.4	10.7	7.6
		Medium	9.3	7.5	7.7	6.8	11.3	7.5	9.8	6.9
		Low	8.4	6.7	7.0	6.1	10.3	6.7	8.9	6.2
	6	High	11.1	9.0	9.6	8.3	14.3	9.3	12.2	8.4
		Medium	10.0	8.0	8.7	7.4	13.0	8.3	11.1	7.6
		Low	9.0	7.1	7.8	6.6	11.6	7.4	10.1	6.7
HCFC-14H1	4	High	11.0	9.4	8.8	8.5	13.6	9.4	11.0	8.3
		Medium	10.0	8.5	8.0	7.6	12.4	8.5	10.1	7.5
		Low	9.1	7.6	7.3	6.9	11.4	7.7	9.3	6.8
	5	High	12.1	10.3	10.5	9.6	15.6	10.5	13.2	9.5
		Medium	10.9	9.2	9.5	8.6	14.2	9.4	12.1	8.6
		Low	10.0	8.2	8.7	7.7	13.0	8.5	11.1	7.7
	6	High	13.9	11.3	11.9	10.5	17.0	11.3	14.9	10.4
		Medium	12.5	10.1	10.8	9.3	15.4	10.1	13.5	9.3
		Low	11.3	9.0	9.8	8.3	14.0	9.1	12.3	8.4

CONCEALED DUCTED FAN COIL UNIT (HIGH ESP)

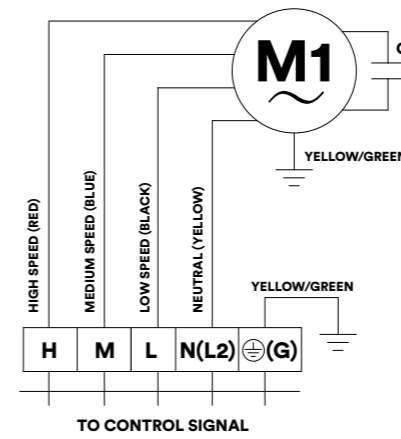
Unit Model	Rows of Coil	Fan Speed	Air on DBT/WBT 23°C/16°C				Air on DBT/WBT 24°C/18°C			
			Standard Application EWT/LWT 5.5°C/11.5°C		High Delta T Application EWT/LWT 5.5°C/14.5°C		Standard Application EWT/LWT 5.5°C/11.5°C		High Delta T Application EWT/LWT 5.5°C/14.5°C	
			T.C.	S.C.	T.C.	S.C.	T.C.	S.C.	T.C.	S.C.
			(kw)	(kw)	(kw)	(kw)	(kw)	(kw)	(kw)	(kw)
HCFC-18H1	4	High	12.5	10.8	10.4	10.0	16.1	11.0	13.1	9.8
		Medium	11.6	10.0	9.7	9.2	15.1	10.2	12.3	9.1
		Low	10.5	8.9	8.9	8.2	13.7	9.2	11.2	8.1
HCFC-18H1	5	High	14.3	12.0	12.2	11.1	18.4	12.3	15.3	11.1
		Medium	13.2	11.1	11.3	10.2	17.2	11.4	14.3	10.2
		Low	12.0	9.8	10.2	9.1	15.6	10.2	13.0	9.1
HCFC-18H1	6	High	15.6	12.9	13.8	12.2	20.2	13.3	16.9	12.0
		Medium	14.5	11.8	12.9	11.1	18.7	12.2	15.8	11.0
		Low	12.9	10.5	11.5	9.9	16.9	10.9	14.2	9.8
HCFC-20H1	4	High	14.6	12.8	11.1	11.0	18.5	12.8	14.3	11.2
		Medium	13.5	11.7	10.9	10.6	17.2	11.8	13.4	10.3
		Low	12.4	10.6	9.9	9.5	15.9	10.8	12.3	9.3
HCFC-20H1	5	High	17.0	14.2	13.9	12.9	19.7	13.6	17.2	12.6
		Medium	15.8	13.0	12.8	11.7	18.4	12.5	16.0	11.6
		Low	14.3	11.6	11.7	10.5	16.8	11.3	14.7	10.5
HCFC-20H1	6	High	17.9	14.8	15.8	13.8	22.9	15.1	19.7	13.8
		Medium	16.5	13.5	14.5	12.6	21.2	13.9	18.3	12.7
		Low	15.0	12.1	13.2	11.3	19.3	12.5	16.7	11.4
HCFC-24H1	4	High	17.4	15.3	13.3	13.1	22.0	15.4	17.1	13.4
		Medium	15.9	13.7	12.7	12.4	20.2	13.9	15.7	12.1
		Low	14.8	12.1	11.9	11.5	19.0	12.9	14.7	11.2
HCFC-24H1	5	High	19.9	16.8	16.6	15.5	23.8	16.5	20.6	15.2
		Medium	18.1	15.1	15.1	13.8	21.8	14.9	18.8	13.6
		Low	16.9	13.9	14.0	12.7	20.4	13.7	17.6	12.6
HCFC-24H1	6	High	21.7	17.9	18.9	16.7	27.6	18.3	23.6	16.6
		Medium	19.6	15.9	17.1	14.8	25.1	16.4	21.5	14.9
		Low	18.2	14.6	15.8	13.6	23.3	15.1	20.1	13.7
HCFC-30H1	4	High	21.1	18.6	16.3	16.0	25.4	18.2	20.8	16.3
		Medium	19.7	17.2	16.0	15.6	23.9	16.9	19.6	15.2
		Low	18.4	15.8	14.9	14.3	22.3	15.6	18.4	14.0
HCFC-30H1	5	High	23.0	20.0	20.3	18.9	29.0	20.1	25.1	18.5
		Medium	21.4	18.4	18.9	17.4	27.2	18.6	23.5	17.1
		Low	19.9	16.9	17.5	15.9	25.4	17.2	21.9	15.7
HCFC-30H1	6	High	26.4	21.8	23.0	20.4	31.6	21.4	28.1	20.0
		Medium	24.6	20.0	21.4	18.7	29.6	19.8	26.2	18.4
		Low	22.7	18.3	19.7	17.0	27.5	18.2	24.4	16.9

CONCEALED DUCTED FAN COIL UNIT (HIGH ESP)

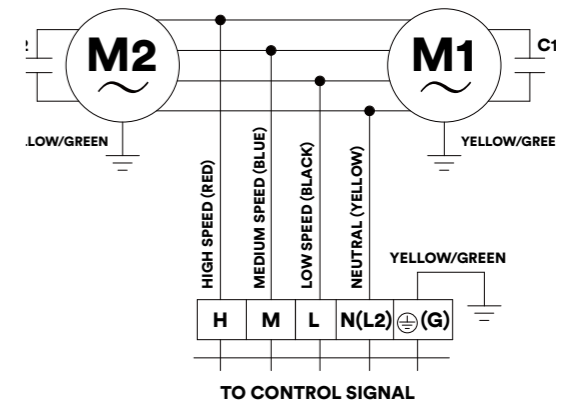
Unit Model	Rows of Coil	Fan Speed	Air on DBT/WBT 23°C/16°C				Air on DBT/WBT 24°C/18°C			
			Standard Application EWT/LWT 5.5°C/11.5°C		High Delta T Application EWT/LWT 5.5°C/14.5°C		Standard Application EWT/LWT 5.5°C/11.5°C		High Delta T Application EWT/LWT 5.5°C/14.5°C	
			T.C.	S.C.	T.C.	S.C.	T.C.	S.C.	T.C.	S.C.
			(kw)	(kw)	(kw)	(kw)	(kw)	(kw)	(kw)	(kw)
HCFC-36H1	4	High	23.9	21.6	19.4	19.1	27.1	20.3	24.7	19.4
		Medium	22.1	19.6	18.7	18.2	25.1	18.5	22.9	17.6
		Low	20.3	17.7	17.2	16.5	23.2	16.8	21.3	16.1
HCFC-36H1	5	High	27.3	23.8	24.1	22.4	31.2	21.5	29.0	21.7
		Medium	25.0	21.4	22.1	20.2	28.8	20.4	26.7	19.6
		Low	23.0	19.4	20.2	18.2	26.7	18.6	24.7	17.8
HCFC-36H1	6	High	29.7	25.2	26.8	24.0	37.6	25.5	31.9	23.2
		Medium	27.2	22.7	24.5	21.5	34.5	23.1	29.3	20.9
		Low	24.8	20.4	22.4	19.4	31.8	21.0	27.0	19.0
HCFC-42H1	4	High	26.9	24.1	22.7	22.4	30.3	22.6	27.7	21.0
		Medium	25.1	22.1	21.1	20.5	28.4	20.9	26.0	19.9
		Low	23.5	20.5	19.8	19.0	26.9	19.5	24.5	18.5
HCFC-42H1	5	High	30.4	26.3	27.0	24.9	38.3	26.5	31.8	23.9
		Medium	28.1	24.1	25.0	22.8	35.8	24.4	29.7	21.9
		Low	26.3	22.3	23.3	21.0	33.6	22.7	27.9	20.3
HCFC-42H1	6	High	33.1	28.0	28.4	26.0	42.0	28.4	35.3	25.6
		Medium	30.7	25.6	26.3	23.7	39.0	26.0	32.8	23.5
		Low	28.6	23.6	24.6	21.9	36.6	24.2	30.8	21.8
HCFC-48H1	4	High	30.1	26.9	25.4	25.0	34.2	25.3	31.1	24.1
		Medium	28.2	24.8	23.8	23.0	32.1	23.5	29.2	22.3
		Low	25.8	22.4	21.9	20.7	29.6	21.3	27.0	20.3
HCFC-48H1	5	High	34.0	29.4	30.2	27.8	42.9	29.6	35.7	26.7
		Medium	31.6	27.0	28.1	25.5	40.2	27.4	33.4	24.6
		Low	28.9	24.3	25.6	22.9	37.0	24.8	30.8	22.3
HCFC-48H1	6	High	37.2	31.3	31.9	29.1	47.2	31.8	39.7	28.7
		Medium	34.5	28.7	29.7	26.6	43.9	29.2	37.0	26.4
		Low	31.5	25.7	27.0	23.9	40.2	26.4	34.0	23.8
HCFC-54H1	4	High	30.9	28.6	28.6	27.7	38.7	28.3	33.4	26.2
		Medium	29.3	26.9	27.1	26.0	36.9	26.7	31.7	24.6
		Low	27.3	24.6	25.2	23.8	34.5	24.6	29.7	22.7
HCFC-54H1	5	High	38.1	32.6	32.6	30.3	44.2	31.3	40.1	29.7
		Medium	35.9	30.5	30.8	28.4	41.9	29.4	38.1	27.9
		Low	33.3	27.9	28.4	25.8	39.0	27.0	35.5	25.6
HCFC-54H1	6	High	41.7	34.7	35.8	32.3	48.8	33.7	44.6	31.9
		Medium	39.3	32.5	33.8	30.1	46.2	31.6	42.2	29.9
		Low	36.2	29.5	31.2	27.4	43.0	28.9	39.2	27.4

# WIRING DIAGRAM OF FAN COIL UNIT

ELECTRICAL WIRING OF FCU UNITS WITHOUT ELEC. HEATER

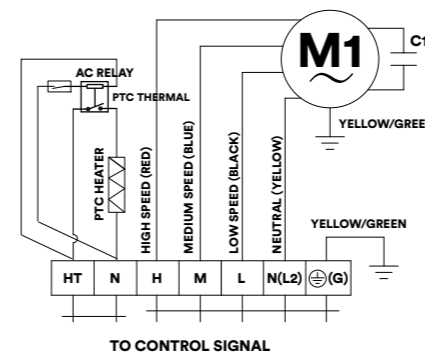


ONE FAN MOTOR UNIT

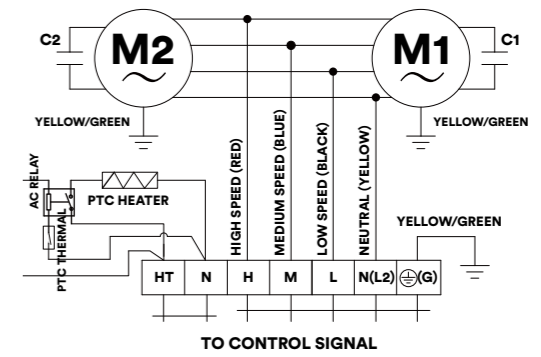


TWO FAN MOTOR UNIT

ELECTRICAL WIRING OF FCU UNITS WITH ELEC. HEATER



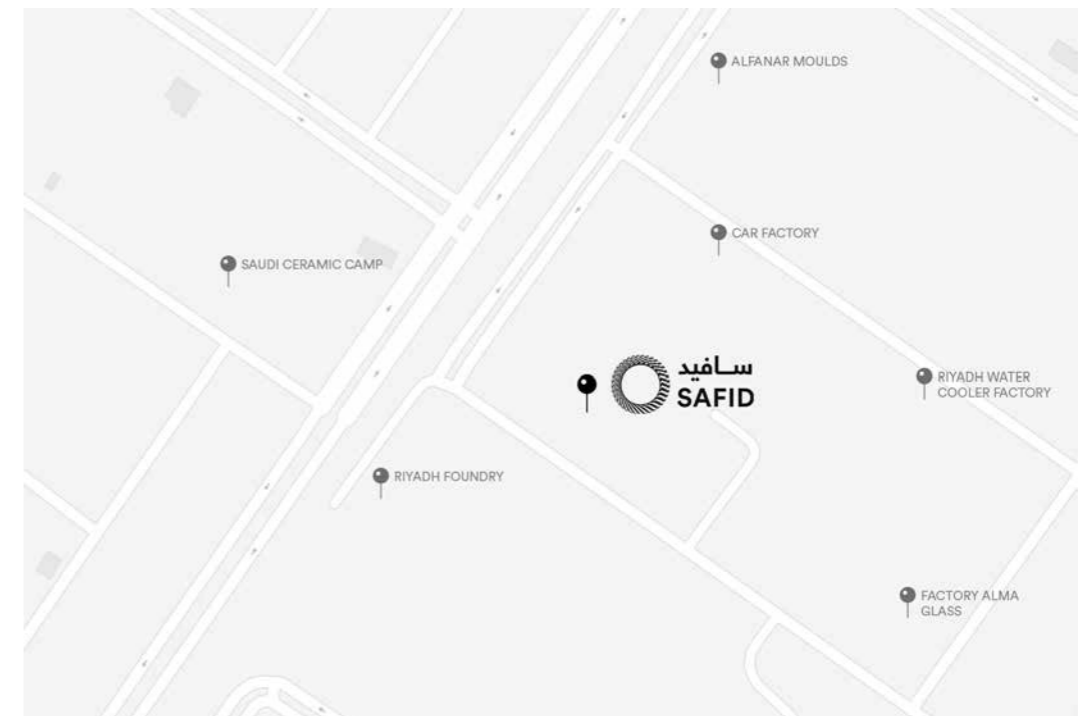
ONE FAN MOTOR UNIT



TWO FAN MOTOR UNIT

# CONTACT US

## KINGDOM OF SAUDI ARABIA RIYADH



### VISIT OUR OFFICE:

SAFID CO LTD - HEAD OFFICE & PLANT  
Second Industrial Area  
Riyadh, Kingdom of Saudi Arabia

### OR CONTACT US AT:

P. O. Box 15300, Riyadh, 11444, Kingdom of Saudi Arabia  
Tel: +966 11 498 2984  
Fax: +966 11 498 2497  
Email: [sales@safid.com](mailto:sales@safid.com)

or visit our website: [www.safid.com](http://www.safid.com)